

**INTEGRATED DEVELOPMENT PROJECT FOR SOURCE SUSTAINABILITY AND CLIMATE RESILIENT RAINFED AGRICULTURE**

**CONSOLIDATED MONTHLY SUMMARY OF REVENUE AND EXPENDITURE FOR THE MONTH OF MARCH, 2021.**

I. REVENUE										
No.	BUDGET SUB HEAD	EXPENDITURE AS PER DDOs OF IDP SOLAN			EXPENDITURE AS PER TREASURY CTR			VARIATION (Col. 6 & 9)	VARIATION (Allotment minus Expd. Col. 3 minus Col.9)	
		ALLOTMENT	TOTAL UPTO PREVIOUS MONTH	TOTAL BOOKING DURING THE MONTH	TOTAL	TOTAL UPTO PREVIOUS MONTH	TOTAL BOOKING DURING THE MONTH			TOTAL
1	2	3	4	5	6	7	8	9	10	11
	<b>0070-60-118-01- RECEIPT FROM RIGHT TO INFORMATION ACT</b>									
1	Executive Director Solan (DDO Code-974)	0	700	0	700	700	0	700	0	
2	DPO IDP Sirmour at Nahani (DDO Code-977)	0	0	0	0	0	0	0	0	
3	DPO IDP Solan (DDO Code-978)	0	0	0	0	0	0	0	0	
4	DPO IDP Bilaspur (DDO Code-979)	0	70	0	70	70	0	70	0	
5	DPO IDP Shimla (DDO Code-980)	0	0	0	0	0	0	0	0	
6	DPO IDP Kullu (DDO Code-981)	0	0	0	0	0	0	0	0	
7	DPO IDP Mandi (DDO Code-982)	0	0	0	0	0	0	0	0	
8	DPO IDP Hamirpur (DDO Code-983)	0	0	0	0	0	0	0	0	
9	DPO IDP Una (DDO Code-984)	0	810	0	810	810	0	810	0	
10	DPO IDP Kangra at D/Shala (DDO Code-985)	0	0	0	0	0	0	0	0	
11	DPO IDP Chamba (DDO Code-986)	0	0	0	0	0	0	0	0	
	<b>TOTAL-0070-60-118-01- RECEIPT FROM R.T.I.ACT</b>		<b>1580</b>	<b>0</b>	<b>1580</b>	<b>1580</b>	<b>0</b>	<b>1580</b>	<b>0</b>	
	<b>0070-60-800-06 RECEIPT FROM ATTACHED VEHICLES</b>									
1	Executive Director Solan (DDO Code-974)	0	8775	750	9525	8775	750	9525	0	
2	DPO IDP Sirmour at Nahani (DDO Code-977)	0	0	0	0	0	0	0	0	
3	DPO IDP Solan (DDO Code-978)	0	3375	0	3375	3375	0	3375	0	
4	DPO IDP Bilaspur (DDO Code-979)	0	0	0	0	0	0	0	0	
5	DPO IDP Shimla (DDO Code-980)	0	0	0	0	0	0	0	0	
6	DPO IDP Kullu (DDO Code-981)	0	0	0	0	0	0	0	0	
7	DPO IDP Mandi (DDO Code-982)	0	1875	375	2250	1875	375	2250	0	
8	DPO IDP Hamirpur (DDO Code-983)	0	0	0	0	0	0	0	0	
9	DPO IDP Una (DDO Code-984)	0	1875	375	2250	1875	375	2250	0	
10	DPO IDP Kangra at D/Shala (DDO Code-985)	0	2625	375	3000	2625	375	3000	0	
11	DPO IDP Chamba (DDO Code-986)	0	0	0	0	0	0	0	0	
	<b>TOTAL-0070-60-800-06 (ATTACHED VEHICLES)</b>	<b>0</b>	<b>18525</b>	<b>1875</b>	<b>20400</b>	<b>18525</b>	<b>1875</b>	<b>20400</b>	<b>0</b>	
	<b>0070-60-800-17- PROCUREMENT OF TENDER FEE</b>									
1	Executive Director Solan (DDO Code-974)	0	0	0	0	0	0	0	0	
2	DPO IDP Sirmour at Nahani (DDO Code-977)	0	0	0	0	0	0	0	0	
3	DPO IDP Solan (DDO Code-978)	0	0	0	0	0	0	0	0	
4	DPO IDP Bilaspur (DDO Code-979)	0	0	0	0	0	0	0	0	
5	DPO IDP Shimla (DDO Code-980)	0	0	0	0	0	0	0	0	
6	DPO IDP Kullu (DDO Code-981)	0	78400	4550	82950	78400	4550	82950	0	
7	DPO IDP Mandi (DDO Code-982)	0	0	0	0	0	0	0	0	
8	DPO IDP Hamirpur (DDO Code-983)	0	71000	3900	74900	71000	3900	74900	0	
9	DPO IDP Una (DDO Code-984)	0	0	0	0	0	0	0	0	
10	DPO IDP Kangra at D/Shala (DDO Code-985)	0	32300	88500	120800	32300	88500	120800	0	
11	DPO IDP Chamba (DDO Code-986)	0	42600	13600	56200	42600	13600	56200	0	
	<b>TOTAL-0070-60-800-17- PROCUREMENT OF TENDER FEE</b>	<b>0</b>	<b>224300</b>	<b>110550</b>	<b>334850</b>	<b>224300</b>	<b>110550</b>	<b>334850</b>	<b>0</b>	
	<b>0216-01-106-03- RECEIPT FROM ESTATE OFFICE</b>									
1	Executive Director Solan (DDO Code-974)	0	0	0	0	0	0	0	0	
2	DPO IDP Sirmour at Nahani (DDO Code-977)	0	0	0	0	0	0	0	0	
3	DPO IDP Solan (DDO Code-978)	0	106	0	106	106	0	106	0	
4	DPO IDP Bilaspur (DDO Code-979)	0	2694	0	2694	2694	0	2694	0	
5	DPO IDP Shimla (DDO Code-980)	0	0	0	0	0	0	0	0	
6	DPO IDP Kullu (DDO Code-981)	0	0	0	0	0	0	0	0	
7	DPO IDP Mandi (DDO Code-982)	0	2716	0	2716	2716	0	2716	0	
8	DPO IDP Hamirpur (DDO Code-983)	0	228	0	228	228	0	228	0	
9	DPO IDP Una (DDO Code-984)	0	0	0	0	0	0	0	0	
10	DPO IDP Kangra at D/Shala (DDO Code-985)	0	0	0	0	0	0	0	0	
11	DPO IDP Chamba (DDO Code-986)	0	898	898	1796	898	898	1796	0	
	<b>0216-01-106-03- RECEIPT FROM ESTATE OFFICE</b>	<b>0</b>	<b>6642</b>	<b>898</b>	<b>7540</b>	<b>6642</b>	<b>898</b>	<b>7540</b>	<b>0</b>	

Sl. No.	BUDGET SUB HEAD	EXPENDITURE AS PER DDOs OF IDP, SOLAN				EXPENDITURE AS PER TREASURY CTR			VARIATION (Col. 6 & 9)	VARIATION (Allotment minus Expend. Col. 3 minus Col. 9)
		ALLOTMENT	TOTAL UPTO PREVIOUS MONTH	TOTAL BOOKING DURING THE MONTH	TOTAL	TOTAL UPTO PREVIOUS MONTH	TOTAL BOOKING DURING THE MONTH	TOTAL		
1	2	3	4	5	6	7	8	9	10	11
<b>0406-01-800-04-RECEIPT FROM RENT OF BUILDING:</b>										
1	Executive Director Solan (DDO Code-974)	0	54359	3292	57651	54359	3292	57651	0	
2	DPO IDP Sirmour at Nahani (DDO Code-977)	0	14646	4226	18872	14646	4226	18872	0	
3	DPO IDP Solan (DDO Code-978)	0	9592	1004	10596	9592	1004	10596	0	
4	DPO IDP Bilaspur (DDO Code-979)	0	11302	1354	12656	11302	1354	12656	0	
5	DPO IDP Shimla (DDO Code-980)	0	6252	0	6252	6252	0	6252	0	
6	DPO IDP Kullu (DDO Code-981)	0	4560	456	5016	4560	456	5016	0	
7	DPO IDP Mandi (DDO Code-982)	0	0	0	0	0	0	0	0	
8	DPO IDP Hamirpur (DDO Code-983)	0	10562	1126	11688	10562	1126	11688	0	
9	DPO IDP Una (DDO Code-984)	0	6208	776	6984	6208	776	6984	0	
10	DPO IDP Kangra at D/Shala (DDO Code-985)	0	6388	616	7004	6388	616	7004	0	
11	DPO IDP Chamba (DDO Code-986)	0	1702	334	2036	1702	334	2036	0	
<b>0406-01-800-04 (RECEIPT FROM RENT OF BUILDING)</b>		0	125571	13184	138755	125571	13184	138755	0	
<b>0406-01-800-05-RECEIPT FROM REGISTRATION FEES</b>										
1	Executive Director Solan (DDO Code-974)	0	0	0	0	0	0	0	0	
2	DPO IDP Sirmour at Nahani (DDO Code-977)	0	47500	0	47500	47500	0	47500	0	
3	DPO IDP Solan (DDO Code-978)	0	0	0	0	0	0	0	0	
4	DPO IDP Bilaspur (DDO Code-979)	0	31500	0	31500	31500	0	31500	0	
5	DPO IDP Shimla (DDO Code-980)	0	0	0	0	0	0	0	0	
6	DPO IDP Kullu (DDO Code-981)	0	20500	0	20500	20500	0	20500	0	
7	DPO IDP Mandi (DDO Code-982)	0	0	22500	22500	0	22500	22500	0	
8	DPO IDP Hamirpur (DDO Code-983)	0	4500	0	4500	4500	0	4500	0	
9	DPO IDP Una (DDO Code-984)	0	44500	0	44500	44500	0	44500	0	
10	DPO IDP Kangra at D/Shala (DDO Code-985)	0	0	0	0	0	0	0	0	
11	DPO IDP Chamba (DDO Code-986)	0	16500	0	16500	16500	0	16500	0	
<b>TOTAL 0406-01-800-05 RECEIPT FROM REGI FEE</b>			165000	22500	187500	165000	22500	187500	0	
<b>0406-01-800-18-OTHER MISCELLANOUS RECEIPTS</b>										
1	Executive Director Solan (DDO Code-974)	0	117610	0	117610	117610	0	117610	0	
2	DPO IDP Sirmour at Nahani (DDO Code-977)	0	184595	63175	247770	184595	63175	247770	0	
3	DPO IDP Solan (DDO Code-978)	0	76400	59000	135400	76400	59000	135400	0	
4	DPO IDP Bilaspur (DDO Code-979)	0	129252	23880	153132	129252	23880	153132	0	
5	DPO IDP Shimla (DDO Code-980)	0	131800	0	131800	131800	0	131800	0	
6	DPO IDP Kullu (DDO Code-981)	0	133500	0	133500	133500	0	133500	0	
7	DPO IDP Mandi (DDO Code-982)	0	114651	66700	181351	114651	66700	181351	0	
8	DPO IDP Hamirpur (DDO Code-983)	0	81260	93000	174260	81260	93000	174260	0	
9	DPO IDP Una (DDO Code-984)	0	202350	0	202350	202350	0	202350	0	
10	DPO IDP Kangra at D/Shala (DDO Code-985)	0	39600	5000	44600	39600	5000	44600	0	
11	DPO IDP Chamba (DDO Code-986)	0	36732	4500	41232	36732	4500	41232	0	
<b>TOTAL 0406-01-800-18 (OTHER MISC. RECEIPTS)</b>		0	1247750	315255	1563005	1247750	315255	1563005	0	
<b>TOTAL- 0406 REVENUE</b>										
1	Executive Director Solan (DDO Code-974)	0	181444	4042	185486	181444	4042	185486	0	
2	DPO IDP Sirmour at Nahani (DDO Code-977)	0	246741	67401	314142	246741	67401	314142	0	
3	DPO IDP Solan (DDO Code-978)	0	89473	60004	149477	89473	60004	149477	0	
4	DPO IDP Bilaspur (DDO Code-979)	0	174818	25234	200052	174818	25234	200052	0	
5	DPO IDP Shimla (DDO Code-980)	0	138052	0	138052	138052	0	138052	0	
6	DPO IDP Kullu (DDO Code-981)	0	236960	5006	241966	236960	5006	241966	0	
7	DPO IDP Mandi (DDO Code-982)	0	119242	89575	208817	119242	89575	208817	0	
8	DPO IDP Hamirpur (DDO Code-983)	0	167550	98026	265576	167550	98026	265576	0	
9	DPO IDP Una (DDO Code-984)	0	255743	1151	256894	255743	1151	256894	0	
10	DPO IDP Kangra at D/Shala (DDO Code-985)	0	80913	94491	175404	80913	94491	175404	0	
11	DPO IDP Chamba (DDO Code-986)	0	98432	19332	117764	98432	19332	117764	0	
<b>TOTAL- 0406 -REVENUE</b>		0	1789368	464262	2253630	1789368	464262	2253630	0	

Sl. No.	BUDGET SUB HEAD	EXPENDITURE AS PER DDOs OF IDP SOLAN				EXPENDITURE AS PER TREASURY CTR			VARIATION (Col. 6 & 9)	VARIATION (Allotment minus Exptd. Col. 3 minus Col.9)
		ALLOTMENT	TOTAL UPTO PREVIOUS MONTH	TOTAL BOOKING DURING THE MONTH	TOTAL	TOTAL UPTO PREVIOUS MONTH	TOTAL BOOKING DURING THE MONTH	TOTAL		
1	2	3	4	5	6	7	8	9	10	11
<b>II- EXPENDITURE (DEMAND No. 16 - GENERAL)</b>										
<b>MAJOR HEAD-2406- FORESTRY &amp; WILD LIFE PLAN-01 FORESTRY-102 SOCIAL AND FARM FORESTRY-37-INTEGRATED DEVELOPMENT PROJECT FOR SOURCE SUSTAINABILITY AND CLIMATE RESILIENT RAINFED AGRICULTURE.</b>										
<b>16-2406-01-102-37-SOON-01-SALARIES</b>										
1	Executive Director Solan (DDO Code-974)	13218900	12283187	935617	13218804	12283187	935617	13218804	0	96
2	DPO IDP Sirmour at Nahan (DDO Code-977)	6716300	6123342	592922	6716264	6123342	592922	6716264	0	36
3	DPO IDP Solan (DDO Code-978)	6618100	6101883	516131	6618014	6101883	516131	6618014	0	86
4	DPO IDP Bilaspur (DDO Code-979)	5527200	5031803	495340	5527143	5031803	495340	5527143	0	57
5	DPO IDP Shimla (DDO Code-980)	4224800	3850393	374370	4224763	3850393	374370	4224763	0	37
6	DPO IDP Kullu (DDO Code-981)	6221900	5647513	574320	6221833	5647513	574320	6221833	0	67
7	DPO IDP Mandi (DDO Code-982)	6860100	6285826	574191	6860017	6285826	574191	6860017	0	83
8	DPO IDP Hamirpur (DDO Code-983)	4780600	4352726	427807	4780533	4352726	427807	4780533	0	67
9	DPO IDP Una (DDO Code-984)	6492800	6035767	456945	6492712	6035767	456945	6492712	0	88
10	DPO IDP Kangra at D/Shala (DDO Code-985)	6474000	5620940	853029	6473969	5620940	853029	6473969	0	31
11	DPO IDP Chamba (DDO Code-986)	3608800	3106513	502262	3608775	3106513	502262	3608775	0	25
	<b>TOTAL (01)-SALARIES</b>	<b>70743500</b>	<b>64439893</b>	<b>6302934</b>	<b>70742827</b>	<b>64439893</b>	<b>6302934</b>	<b>70742827</b>	<b>0</b>	<b>673</b>
<b>16-2406-01-102-37-SOON-02-WAGES</b>										
1	Executive Director Solan (DDO Code-974)	0	0	0	0	0	0	0	0	0
2	DPO IDP Sirmour at Nahan (DDO Code-977)	1906949	1906043	906	1906949	1906043	906	1906949	0	0
3	DPO IDP Solan (DDO Code-978)	1983781	1983781	0	1983781	1983781	0	1983781	0	0
4	DPO IDP Bilaspur (DDO Code-979)	1940994	1940994	0	1940994	1940994	0	1940994	0	0
5	DPO IDP Shimla (DDO Code-980)	373452	373452	0	373452	373452	0	373452	0	0
6	DPO IDP Kullu (DDO Code-981)	1513641	1513641	0	1513641	1513641	0	1513641	0	0
7	DPO IDP Mandi (DDO Code-982)	1787928	1787928	0	1787928	1787928	0	1787928	0	0
8	DPO IDP Hamirpur (DDO Code-983)	1411241	1411241	0	1411241	1411241	0	1411241	0	0
9	DPO IDP Una (DDO Code-984)	1921481	1921481	0	1921481	1921481	0	1921481	0	0
10	DPO IDP Kangra at D/Shala (DDO Code-985)	1361475	1361475	0	1361475	1361475	0	1361475	0	0
11	DPO IDP Chamba (DDO Code-986)	1520058	1520058	0	1520058	1520058	0	1520058	0	0
	<b>TOTAL (02)- WAGES(N)</b>	<b>15721000</b>	<b>15720094</b>	<b>906</b>	<b>15721000</b>	<b>15720094</b>	<b>906</b>	<b>15721000</b>	<b>0</b>	<b>0</b>
<b>16-2406-01-102-37-SOON-03-TRAVELLING EXPENSES</b>										
1	Executive Director Solan (DDO Code-974)	18000	8523	7859	16382	8523	7859	16382	0	1618
2	DPO IDP Sirmour at Nahan (DDO Code-977)	49306	47985	1321	49306	47985	1321	49306	0	0
3	DPO IDP Solan (DDO Code-978)	0	0	0	0	0	0	0	0	0
4	DPO IDP Bilaspur (DDO Code-979)	82987	82987	0	82987	82987	0	82987	0	0
5	DPO IDP Shimla (DDO Code-980)	76880	76880	0	76880	76880	0	76880	0	0
6	DPO IDP Kullu (DDO Code-981)	64323	64323	0	64323	64323	0	64323	0	0
7	DPO IDP Mandi (DDO Code-982)	29380	29380	0	29380	29380	0	29380	0	0
8	DPO IDP Hamirpur (DDO Code-983)	66090	66090	0	66090	66090	0	66090	0	0
9	DPO IDP Una (DDO Code-984)	89924	89924	0	89924	89924	0	89924	0	0
10	DPO IDP Kangra at D/Shala (DDO Code-985)	89210	89210	0	89210	89210	0	89210	0	0
11	DPO IDP Chamba (DDO Code-986)	53900	53900	0	53900	53900	0	53900	0	0
	<b>TOTAL 03 TRAVEL EXP</b>	<b>620000</b>	<b>609202</b>	<b>9180</b>	<b>618382</b>	<b>609202</b>	<b>9180</b>	<b>618382</b>	<b>0</b>	<b>1618</b>
<b>16-2406-01-102-37-SOON-05-OFFICE EXPENSES</b>										
1	Executive Director Solan (DDO Code-974)	3818200	3615819	202263	3818082	3615819	202263	3818082	0	118
2	DPO IDP Sirmour at Nahan (DDO Code-977)	180000	146528	33472	180000	146528	33472	180000	0	0
3	DPO IDP Solan (DDO Code-978)	262700	148613	114086	262699	148613	114086	262699	0	1
4	DPO IDP Bilaspur (DDO Code-979)	347800	244850	102888	347738	244850	102888	347738	0	62
5	DPO IDP Shimla (DDO Code-980)	218200	148137	70063	218200	148137	70063	218200	0	0
6	DPO IDP Kullu (DDO Code-981)	180900	141098	39802	180900	141098	39802	180900	0	0
7	DPO IDP Mandi (DDO Code-982)	280000	199756	80244	280000	199756	80244	280000	0	0
8	DPO IDP Hamirpur (DDO Code-983)	229600	149517	80081	229598	149517	80081	229598	0	2
9	DPO IDP Una (DDO Code-984)	374900	249873	125027	374900	249873	125027	374900	0	0
10	DPO IDP Kangra at D/Shala (DDO Code-985)	407700	199470	208230	407700	199470	208230	407700	0	0
11	DPO IDP Chamba (DDO Code-986)	200000	149264	50595	199859	149264	50595	199859	0	141
	<b>TOTAL (05)- OFFICE EXP.</b>	<b>6500000</b>	<b>5392925</b>	<b>1106751</b>	<b>6499676</b>	<b>5392925</b>	<b>1106751</b>	<b>6499676</b>	<b>0</b>	<b>324</b>

Contd.P/4

Sl. No.	BUDGET SUB HEAD	EXPENDITURE AS PER DDOs OF IDP,SOLAN				EXPENDITURE AS PER TREASURY CTR			VARIATION (Col. 6 & 9)	VARIATION (Allotment minus Expd. Col. 3 minus Col.9)
		ALLOTMENT	TOTAL UPTO PREVIOUS MONTH	TOTAL BOOKING DURING THE MONTH	TOTAL	TOTAL UPTO PREVIOUS MONTH	TOTAL BOOKING DURING THE MONTH	TOTAL		
1	2	3	4	5	6	7	8	9	10	11
<b>16-2406-01-102-37-SOON-06-MEDICAL EXPENDITURE</b>										
1	Executive Director Solan (DDO Code-974)	484100	51131	557	51688	51131	557	51688	0	432412
2	DPO IDP Sirmour at Nahan (DDO Code-977)	130700	96136	34564	130700	96136	34564	130700	0	0
3	DPO IDP Solan (DDO Code-978)	46100	46025	0	46025	46025	0	46025	0	75
4	DPO IDP Bilaspur (DDO Code-979)	282700	134782	58498	193280	134782	58498	193280	0	89420
5	DPO IDP Shimla (DDO Code-980)	732900	405037	327802	732839	405037	327802	732839	0	61
6	DPO IDP Kullu (DDO Code-981)	10100	10007	0	10007	10007	0	10007	0	93
7	DPO IDP Mandi (DDO Code-982)	45800	38220	7580	45800	38220	7580	45800	0	0
8	DPO IDP Hamirpur (DDO Code-983)	79600	78057	1528	79585	78057	1528	79585	0	15
9	DPO IDP Una (DDO Code-984)	22100	22070	0	22070	22070	0	22070	0	30
10	DPO IDP Kangra at D/Shala (DDO Code-985)	61800	61723	0	61723	61723	0	61723	0	77
11	DPO IDP Chamba (DDO Code-986)	4100	1935	2106	4041	1935	2106	4041	0	59
	<b>TOTAL(06)- MED. EXP</b>	<b>1900000</b>	<b>945123</b>	<b>432635</b>	<b>1377758</b>	<b>945123</b>	<b>432635</b>	<b>1377758</b>	<b>0</b>	<b>522242</b>
<b>16-2406-01-102-37-SOON-07-RENT,RATE &amp; TAXES</b>										
1	Executive Director Solan (DDO Code-974)	31925	31925	0	31925	31925	0	31925	0	0
2	DPO IDP Sirmour at Nahan (DDO Code-977)	0	0	0	0	0	0	0	0	0
3	DPO IDP Solan (DDO Code-978)	32172	32172	0	32172	32172	0	32172	0	0
4	DPO IDP Bilaspur (DDO Code-979)	43050	43050	0	43050	43050	0	43050	0	0
5	DPO IDP Shimla (DDO Code-980)	45430	45430	0	45430	45430	0	45430	0	0
6	DPO IDP Kullu (DDO Code-981)	19056	19056	0	19056	19056	0	19056	0	0
7	DPO IDP Mandi (DDO Code-982)	216724	216724	0	216724	216724	0	216724	0	0
8	DPO IDP Hamirpur (DDO Code-983)	42435	42435	0	42435	42435	0	42435	0	0
9	DPO IDP Una (DDO Code-984)	42831	42831	0	42831	42831	0	42831	0	0
10	DPO IDP Kangra at D/Shala (DDO Code-985)	43000	43000	0	43000	43000	0	43000	0	0
11	DPO IDP Chamba (DDO Code-986)	5500	5500	0	5500	5500	0	5500	0	0
	<b>TOTAL (07)- R.R.T.</b>	<b>522123</b>	<b>522123</b>	<b>0</b>	<b>522123</b>	<b>522123</b>	<b>0</b>	<b>522123</b>	<b>0</b>	<b>0</b>
<b>16-2406-01102-37-SOON-09-ADV.SALES &amp; PUBLICITY</b>										
1	Executive Director Solan (DDO Code-974)	91300	85731	5511	91242	85731	5511	91242	0	58
2	DPO IDP Sirmour at Nahan (DDO Code-977)	10760	10760	0	10760	10760	0	10760	0	0
3	DPO IDP Solan (DDO Code-978)	7532	7532	0	7532	7532	0	7532	0	0
4	DPO IDP Bilaspur (DDO Code-979)	47112	24608	22141	46749	24608	22141	46749	0	363
5	DPO IDP Shimla (DDO Code-980)	24347	24347	0	24347	24347	0	24347	0	0
6	DPO IDP Kullu (DDO Code-981)	23072	23072	0	23072	23072	0	23072	0	0
7	DPO IDP Mandi (DDO Code-982)	44673	24673	20000	44673	24673	20000	44673	0	0
8	DPO IDP Hamirpur (DDO Code-983)	42979	21870	21109	42979	21870	21109	42979	0	0
9	DPO IDP Una (DDO Code-984)	34468	19968	14451	34419	19968	14451	34419	0	49
10	DPO IDP Kangra at D/Shala (DDO Code-985)	48919	23157	25762	48919	23157	25762	48919	0	0
11	DPO IDP Chamba (DDO Code-986)	24838	24838	0	24838	24838	0	24838	0	0
	<b>TOTAL(09) ADV.</b>	<b>400000</b>	<b>290556</b>	<b>108974</b>	<b>399530</b>	<b>290556</b>	<b>108974</b>	<b>399530</b>	<b>0</b>	<b>470</b>
<b>16-2406-01-102-37-SOON-10-HOSPITALITY</b>										
1	Executive Director Solan (DDO Code-974)	20000	19998	0	19998	19998	0	19998	0	2
2	DPO IDP Sirmour at Nahan (DDO Code-977)	0	0	0	0	0	0	0	0	0
3	DPO IDP Solan (DDO Code-978)	0	0	0	0	0	0	0	0	0
4	DPO IDP Bilaspur (DDO Code-979)	0	0	0	0	0	0	0	0	0
5	DPO IDP Shimla (DDO Code-980)	0	0	0	0	0	0	0	0	0
6	DPO IDP Kullu (DDO Code-981)	0	0	0	0	0	0	0	0	0
7	DPO IDP Mandi (DDO Code-982)	0	0	0	0	0	0	0	0	0
8	DPO IDP Hamirpur (DDO Code-983)	0	0	0	0	0	0	0	0	0
9	DPO IDP Una (DDO Code-984)	0	0	0	0	0	0	0	0	0
10	DPO IDP Kangra at D/Shala (DDO Code-985)	0	0	0	0	0	0	0	0	0
11	DPO IDP Chamba (DDO Code-986)	0	0	0	0	0	0	0	0	0
	<b>TOTAL(10)-HOSPITALITY.</b>	<b>20000</b>	<b>19998</b>	<b>0</b>	<b>19998</b>	<b>19998</b>	<b>0</b>	<b>19998</b>	<b>0</b>	<b>2</b>

Sl. No.	BUDGET SUB HEAD	EXPENDITURE AS PER DDOs OF IDP SOLAN				EXPENDITURE AS PER TREASURY CTR			VARIATION (Col. 6 & 9)	VARIATION (Allotment minus Exptd. Col. 3 minus Col.9)
		ALLOTMENT	TOTAL UPTO PREVIOUS MONTH	TOTAL BOOKING DURING THE MONTH	TOTAL	TOTAL UPTO PREVIOUS MONTH	TOTAL BOOKING DURING THE MONTH	TOTAL		
1	2	3	4	5	6	7	8	9	10	11
	<b>16-2406-01-102-37-SOON-11-FURNISHING</b>									
1	Executive Director Solan (DDO Code-974)	50000	25297	24310	49607	25297	24310	49607	0	393
2	DPO IDP Sirmour at Nahar (DDO Code-977)	0	0	0	0	0	0	0	0	0
3	DPO IDP Solan (DDO Code-978)	0	0	0	0	0	0	0	0	0
4	DPO IDP Bilaspur (DDO Code-979)	0	0	0	0	0	0	0	0	0
5	DPO IDP Shimla (DDO Code-980)	0	0	0	0	0	0	0	0	0
6	DPO IDP Kullu (DDO Code-981)	0	0	0	0	0	0	0	0	0
7	DPO IDP Mandi (DDO Code-982)	0	0	0	0	0	0	0	0	0
8	DPO IDP Hamirpur (DDO Code-983)	0	0	0	0	0	0	0	0	0
9	DPO IDP Una (DDO Code-984)	0	0	0	0	0	0	0	0	0
10	DPO IDP Kangra at D/Shala (DDO Code-985)	0	0	0	0	0	0	0	0	0
11	DPO IDP Chamba (DDO Code-986)	0	0	0	0	0	0	0	0	0
	<b>TOTAL (11)- FURNISHING</b>	<b>50000</b>	<b>25297</b>	<b>24310</b>	<b>49607</b>	<b>25297</b>	<b>24310</b>	<b>49607</b>	<b>0</b>	<b>393</b>
	<b>16-2406-01-102-37-SOON-12-PROFESSIONAL &amp; SPL SERVICES</b>									
1	Executive Director Solan (DDO Code-974)	500000	483800	0	483800	483800	0	483800	0	16200
2	DPO IDP Sirmour at Nahar (DDO Code-977)	0	0	0	0	0	0	0	0	0
3	DPO IDP Solan (DDO Code-978)	0	0	0	0	0	0	0	0	0
4	DPO IDP Bilaspur (DDO Code-979)	0	0	0	0	0	0	0	0	0
5	DPO IDP Shimla (DDO Code-980)	0	0	0	0	0	0	0	0	0
6	DPO IDP Kullu (DDO Code-981)	0	0	0	0	0	0	0	0	0
7	DPO IDP Mandi (DDO Code-982)	0	0	0	0	0	0	0	0	0
8	DPO IDP Hamirpur (DDO Code-983)	0	0	0	0	0	0	0	0	0
9	DPO IDP Una (DDO Code-984)	0	0	0	0	0	0	0	0	0
10	DPO IDP Kangra at D/Shala (DDO Code-985)	0	0	0	0	0	0	0	0	0
11	DPO IDP Chamba (DDO Code-986)	0	0	0	0	0	0	0	0	0
	<b>TOTAL (12)- PROF &amp; SPL SERVICES.</b>	<b>500000</b>	<b>483800</b>	<b>0</b>	<b>483800</b>	<b>483800</b>	<b>0</b>	<b>483800</b>	<b>0</b>	<b>16200</b>
	<b>16-2406-01-102-37-SOON-20-OTHER CHARGES</b>									
1	Executive Director Solan (DDO Code-974)	30135100	29972490	162429	30134919	29972490	162429	30134919	0	181
2	DPO IDP Sirmour at Nahar (DDO Code-977)	53835500	16780980	37054520	53835500	16780980	37054520	53835500	0	0
3	DPO IDP Solan (DDO Code-978)	60715777	15939739	44776038	60715777	15939739	44776038	60715777	0	0
4	DPO IDP Bilaspur (DDO Code-979)	11869500	5768714	5879305	11648019	5768714	5879305	11648019	0	221481
5	DPO IDP Shimla (DDO Code-980)	39421600	990350	38431250	39421600	990350	38431250	39421600	0	0
6	DPO IDP Kullu (DDO Code-981)	13881700	512484	13369216	13881700	512484	13369216	13881700	0	0
7	DPO IDP Mandi (DDO Code-982)	22133000	6003049	16129951	22133000	6003049	16129951	22133000	0	0
8	DPO IDP Hamirpur (DDO Code-983)	69824600	39364033	30460567	69824600	39364033	30460567	69824600	0	0
9	DPO IDP Una (DDO Code-984)	41366300	14071493	27294807	41366300	14071493	27294807	41366300	0	0
10	DPO IDP Kangra at D/Shala (DDO Code-985)	55479300	15448611	40030607	55479218	15448611	40030607	55479218	0	82
11	DPO IDP Chamba (DDO Code-986)	4971000	591571	4379257	4970828	591571	4379257	4970828	0	172
	<b>TOTAL (20)-OTHER CHARGES</b>	<b>403633377</b>	<b>145443514</b>	<b>257967947</b>	<b>403411461</b>	<b>145443514</b>	<b>257967947</b>	<b>403411461</b>	<b>0</b>	<b>221916</b>
	<b>16-2406-01-102-37-SOON-21-MAINTENANCE</b>									
1	Executive Director Solan (DDO Code-974)	1930800	1130363	769534	1899897	1130363	769534	1899897	0	30903
2	DPO IDP Sirmour at Nahar (DDO Code-977)	4500	4495	0	4495	4495	0	4495	0	5
3	DPO IDP Solan (DDO Code-978)	72800	72800	0	72800	72800	0	72800	0	0
4	DPO IDP Bilaspur (DDO Code-979)	199500	199441	0	199441	199441	0	199441	0	59
5	DPO IDP Shimla (DDO Code-980)	0	0	0	0	0	0	0	0	0
6	DPO IDP Kullu (DDO Code-981)	333000	0	332925	332925	0	332925	332925	0	75
7	DPO IDP Mandi (DDO Code-982)	667000	403418	263582	667000	403418	263582	667000	0	0
8	DPO IDP Hamirpur (DDO Code-983)	220500	20455	200045	220500	20455	200045	220500	0	0
9	DPO IDP Una (DDO Code-984)	357000	356957	43	357000	356957	43	357000	0	0
10	DPO IDP Kangra at D/Shala (DDO Code-985)	199900	199872	0	199872	199872	0	199872	0	28
11	DPO IDP Chamba (DDO Code-986)	15000	14715	0	14715	14715	0	14715	0	285
	<b>TOTAL (21)-MAINTT.</b>	<b>4000000</b>	<b>2402516</b>	<b>1566129</b>	<b>3968645</b>	<b>2402516</b>	<b>1566129</b>	<b>3968645</b>	<b>0</b>	<b>31355</b>

Sl. No.	BUDGET SUB HEAD	EXPENDITURE AS PER DDOs OF IDP,SOLAN			EXPENDITURE AS PER TREASURY CTR			VARIATION (Col. 6 & 9)	VARIATION (Allotment minus Expt. Col. 3 minus Col.9)	
		ALLOTMENT	TOTAL UPTO PREVIOUS MONTH	TOTAL BOOKING DURING THE MONTH	TOTAL	TOTAL UPTO PREVIOUS MONTH	TOTAL BOOKING DURING THE MONTH			TOTAL
1	2	3	4	5	6	7	8	9	10	11
<b>16-2406-01-102-37-SOON-27-MOTOR VEHICLE (PUCHASE)</b>										
1	Executive Director Solan (DDO Code-974)	10000000	0	8297104	8297104	0	8297104	8297104	0	1702896
2	DPO IDP Sirmour at Nahan (DDO Code-977)	0	0	0	0	0	0	0	0	0
3	DPO IDP Solan (DDO Code-978)	0	0	0	0	0	0	0	0	0
4	DPO IDP Bilaspur (DDO Code-979)	0	0	0	0	0	0	0	0	0
5	DPO IDP Shimla (DDO Code-980)	0	0	0	0	0	0	0	0	0
6	DPO IDP Kullu (DDO Code-981)	0	0	0	0	0	0	0	0	0
7	DPO IDP Mandi (DDO Code-982)	0	0	0	0	0	0	0	0	0
8	DPO IDP Hamirpur (DDO Code-983)	0	0	0	0	0	0	0	0	0
9	DPO IDP Una (DDO Code-984)	0	0	0	0	0	0	0	0	0
10	DPO IDP Kangra at D/Shala (DDO Code-985)	0	0	0	0	0	0	0	0	0
11	DPO IDP Chamba (DDO Code-986)	0	0	0	0	0	0	0	0	0
	<b>TOTAL (27)-M.VEH..</b>	<b>10000000</b>	<b>0</b>	<b>8297104</b>	<b>8297104</b>	<b>0</b>	<b>8297104</b>	<b>8297104</b>	<b>0</b>	<b>1702896</b>
<b>16-2406-01-102-37-SOON-30-MOTOR VEHICLE</b>										
1	Executive Director Solan (DDO Code-974)	2507447	2112118	394144	2506262	2112118	394144	2506262	0	1185
2	DPO IDP Sirmour at Nahan (DDO Code-977)	382746	382746	0	382746	382746	0	382746	0	0
3	DPO IDP Solan (DDO Code-978)	481981	441981	40000	481981	441981	40000	481981	0	0
4	DPO IDP Bilaspur (DDO Code-979)	378387	378387	0	378387	378387	0	378387	0	0
5	DPO IDP Shimla (DDO Code-980)	377394	368394	9000	377394	368394	9000	377394	0	0
6	DPO IDP Kullu (DDO Code-981)	392512	386676	5836	392512	386676	5836	392512	0	0
7	DPO IDP Mandi (DDO Code-982)	374652	374652	0	374652	374652	0	374652	0	0
8	DPO IDP Hamirpur (DDO Code-983)	395030	395030	0	395030	395030	0	395030	0	0
9	DPO IDP Una (DDO Code-984)	377086	377086	0	377086	377086	0	377086	0	0
10	DPO IDP Kangra at D/Shala (DDO Code-985)	442642	442642	0	442642	442642	0	442642	0	0
11	DPO IDP Chamba (DDO Code-986)	390123	390123	0	390123	390123	0	390123	0	0
	<b>TOTAL 30)-M.VEH..</b>	<b>6500000</b>	<b>6049835</b>	<b>448980</b>	<b>6498815</b>	<b>6049835</b>	<b>448980</b>	<b>6498815</b>	<b>0</b>	<b>1185</b>
<b>16-2406-01-102-37-SOON-33-MATERIAL &amp; SUPPLY</b>										
1	Executive Director Solan (DDO Code-974)	4971170	62816	0	62816	62816	0	62816	0	4908354
2	DPO IDP Sirmour at Nahan (DDO Code-977)	1436056	1436056	0	1436056	1436056	0	1436056	0	0
3	DPO IDP Solan (DDO Code-978)	12186391	11675791	510600	12186391	11675791	510600	12186391	0	0
4	DPO IDP Bilaspur (DDO Code-979)	903213	903213	0	903213	903213	0	903213	0	0
5	DPO IDP Shimla (DDO Code-980)	223374	223374	0	223374	223374	0	223374	0	0
6	DPO IDP Kullu (DDO Code-981)	24500	0	24407	24407	0	24407	24407	0	93
7	DPO IDP Mandi (DDO Code-982)	185906	185906	0	185906	185906	0	185906	0	0
8	DPO IDP Hamirpur (DDO Code-983)	0	0	0	0	0	0	0	0	0
9	DPO IDP Una (DDO Code-984)	11753242	11753242	0	11753242	11753242	0	11753242	0	0
10	DPO IDP Kangra at D/Shala (DDO Code-985)	3378348	3378348	0	3378348	3378348	0	3378348	0	0
11	DPO IDP Chamba (DDO Code-986)	2792800	1392742	1400009	2792751	1392742	1400009	2792751	0	49
	<b>TOTAL (33)-MATERIAL &amp; SUPPLY.</b>	<b>37855000</b>	<b>31011488</b>	<b>1935016</b>	<b>32946504</b>	<b>31011488</b>	<b>1935016</b>	<b>32946504</b>	<b>0</b>	<b>4908496</b>
<b>16-2406-01-102-36-SOON-36-MINOR WORKS</b>										
1	Executive Director Solan (DDO Code-974)	0	0	0	0	0	0	0	0	0
2	DPO IDP Sirmour at Nahan (DDO Code-977)	0	0	0	0	0	0	0	0	0
3	DPO IDP Solan (DDO Code-978)	0	0	0	0	0	0	0	0	0
4	DPO IDP Bilaspur (DDO Code-979)	0	0	0	0	0	0	0	0	0
5	DPO IDP Shimla (DDO Code-980)	0	0	0	0	0	0	0	0	0
6	DPO IDP Kullu (DDO Code-981)	0	0	0	0	0	0	0	0	0
7	DPO IDP Mandi (DDO Code-982)	0	0	0	0	0	0	0	0	0
8	DPO IDP Hamirpur (DDO Code-983)	0	0	0	0	0	0	0	0	0
9	DPO IDP Una (DDO Code-984)	0	0	0	0	0	0	0	0	0
10	DPO IDP Kangra at D/Shala (DDO Code-985)	0	0	0	0	0	0	0	0	0
11	DPO IDP Chamba (DDO Code-986)	0	0	0	0	0	0	0	0	0
	<b>TOTAL (36)- MINOR WORKS.</b>	<b>0</b>	<b>0</b>	<b>0</b>	<b>0</b>	<b>0</b>	<b>0</b>	<b>0</b>	<b>0</b>	<b>0</b>

2. Sl. No.	BUDGET SUB HEAD	EXPENDITURE AS PER DDOs OF IDP, SOLAN				EXPENDITURE AS PER TREASURY CTR			VARIATION (Col. 6 & 9)	VARIATION (Allotment minus Exptd. Col. 3 minus Col. 9)
		ALLOTMENT	TOTAL UPTO PREVIOUS MONTH	TOTAL BOOKING DURING THE MONTH	TOTAL	TOTAL UPTO PREVIOUS MONTH	TOTAL BOOKING DURING THE MONTH	TOTAL		
1	2	3	4	5	6	7	8	9	10	11
	<b>16-2406-01-102-37-SOON-64-TRANSFER TRAVEL EXP.</b>									
1	Executive Director Solan (DDO Code-974)	16800	0	7570	7570	0	7570	7570	0	9230
2	DPO IDP Sirmour at Nahana (DDO Code-977)	0	0	0	0	0	0	0	0	0
3	DPO IDP Solan (DDO Code-978)	0	0	0	0	0	0	0	0	0
4	DPO IDP Bilaspur (DDO Code-979)	11400	0	11400	11400	0	11400	11400	0	0
5	DPO IDP Shimla (DDO Code-980)	0	0	0	0	0	0	0	0	0
6	DPO IDP Kullu (DDO Code-981)	0	0	0	0	0	0	0	0	0
7	DPO IDP Mandi (DDO Code-982)	3200	0	3127	3127	0	3127	3127	0	73
8	DPO IDP Hamirpur (DDO Code-983)	0	0	0	0	0	0	0	0	0
9	DPO IDP Una (DDO Code-984)	0	0	0	0	0	0	0	0	0
10	DPO IDP Kangra at D/Shala (DDO Code-985)	3600	0	3590	3590	0	3590	3590	0	10
11	DPO IDP Chamba (DDO Code-986)	0	0	0	0	0	0	0	0	0
	<b>TOTAL (64)- TRANSFER TRAVEL EXP.</b>	<b>35000</b>	<b>0</b>	<b>25687</b>	<b>25687</b>	<b>0</b>	<b>25687</b>	<b>25687</b>	<b>0</b>	<b>9313</b>
	<b>16-2406-01-102-37-SOON-65-OUTSOURCE CHARGES</b>									
1	Executive Director Solan (DDO Code-974)	15000000	10537255	3519136	14056391	10537255	3519136	14056391	0	943609
2	DPO IDP Sirmour at Nahana (DDO Code-977)	0	0	0	0	0	0	0	0	0
3	DPO IDP Solan (DDO Code-978)	0	0	0	0	0	0	0	0	0
4	DPO IDP Bilaspur (DDO Code-979)	0	0	0	0	0	0	0	0	0
5	DPO IDP Shimla (DDO Code-980)	0	0	0	0	0	0	0	0	0
6	DPO IDP Kullu (DDO Code-981)	0	0	0	0	0	0	0	0	0
7	DPO IDP Mandi (DDO Code-982)	0	0	0	0	0	0	0	0	0
8	DPO IDP Hamirpur (DDO Code-983)	0	0	0	0	0	0	0	0	0
9	DPO IDP Una (DDO Code-984)	0	0	0	0	0	0	0	0	0
10	DPO IDP Kangra at D/Shala (DDO Code-985)	0	0	0	0	0	0	0	0	0
11	DPO IDP Chamba (DDO Code-986)	0	0	0	0	0	0	0	0	0
	<b>TOTAL (65)- OUTSOURCE CHARGES</b>	<b>15000000</b>	<b>10537255</b>	<b>3519136</b>	<b>14056391</b>	<b>10537255</b>	<b>3519136</b>	<b>14056391</b>	<b>0</b>	<b>943609</b>
	<b>TOTAL SOON</b>									
1	Executive Director Solan (DDO Code-974)	82793742	60420453	14326034	74746487	60420453	14326034	74746487	0	8047255
2	DPO IDP Sirmour at Nahana (DDO Code-977)	64652817	26935071	37717705	64652776	26935071	37717705	64652776	0	41
3	DPO IDP Solan (DDO Code-978)	82407334	36450317	45956855	82407172	36450317	45956855	82407172	0	162
4	DPO IDP Bilaspur (DDO Code-979)	21633843	14752829	6569572	21322401	14752829	6569572	21322401	0	311442
5	DPO IDP Shimla (DDO Code-980)	45718377	6505794	39212485	45718279	6505794	39212485	45718279	0	98
6	DPO IDP Kullu (DDO Code-981)	22664704	8317870	14346506	22664376	8317870	14346506	22664376	0	328
7	DPO IDP Mandi (DDO Code-982)	32628363	15549532	17078675	32628207	15549532	17078675	32628207	0	156
8	DPO IDP Hamirpur (DDO Code-983)	77092675	45901454	31191137	77092591	45901454	31191137	77092591	0	84
9	DPO IDP Una (DDO Code-984)	62832132	34940692	27891273	62831965	34940692	27891273	62831965	0	167
10	DPO IDP Kangra at D/Shala (DDO Code-985)	67989894	26868448	41121218	67989666	26868448	41121218	67989666	0	228
11	DPO IDP Chamba (DDO Code-986)	13586119	7251159	6334229	13585388	7251159	6334229	13585388	0	731
	<b>TOTAL-SOON</b>	<b>574000000</b>	<b>283893619</b>	<b>281745689</b>	<b>565639308</b>	<b>283893619</b>	<b>281745689</b>	<b>565639308</b>	<b>0</b>	<b>8360692</b>

Contd.P/8

MAJOR HEAD-2406- FORESTRY & WILD LIFE PLAN-01 FORESTRY-789 SCHEDULED CASTES SUB-PLAN-17-INTEGRATED DEVELOPMENT PROJECT FOR SOURCE SUSTAINABILITY AND CLIMATE RESILIENT RAINFED AGRICULTURE.

Sl. No.	BUDGET SUB HEAD	EXPENDITURE AS PER DDOs OF IDP,SOLAN			EXPENDITURE AS PER TREASURY CTR			VARIATION (Col.6 & 9)	VARIATION (Allotment minus Expt. Col. 3 minus Col.9)	
		ALLOTMENT	TOTAL UPTO PREVIOUS MONTH	TOTAL BOOKING DURING THE MONTH	TOTAL	TOTAL UPTO PREVIOUS MONTH	TOTAL BOOKING DURING THE MONTH			TOTAL
1	2	3	4	5	6	7	8	9	10	11
	<b>32-2406-01-789-17-SOON-02-WAGES (NORMAL)</b>									
1	Executive Director Solan (DDO Code-974)	0	0	0	0	0	0	0	0	0
2	DPO IDP Sirmour at Nahan (DDO Code-977)	899081	899081	0	899081	899081	0	899081	0	0
3	DPO IDP Solan (DDO Code-978)	999382	998889	0	998889	998889	0	998889	0	493
4	DPO IDP Bilaspur (DDO Code-979)	0	0	0	0	0	0	0	0	0
5	DPO IDP Shimla (DDO Code-980)	0	0	0	0	0	0	0	0	0
6	DPO IDP Kullu (DDO Code-981)	0	0	0	0	0	0	0	0	0
7	DPO IDP Mandi (DDO Code-982)	819730	819730	0	819730	819730	0	819730	0	0
8	DPO IDP Hamirpur (DDO Code-983)	0	0	0	0	0	0	0	0	0
9	DPO IDP Una (DDO Code-984)	985017	985017	0	985017	985017	0	985017	0	0
10	DPO IDP Kangra at D/Shala (DDO Code-985)	0	0	0	0	0	0	0	0	0
11	DPO IDP Chamba (DDO Code-986)	977790	977790	0	977790	977790	0	977790	0	0
	<b>TOTAL (02)-WAGES</b>	<b>4681000</b>	<b>4680507</b>	<b>0</b>	<b>4680507</b>	<b>4680507</b>	<b>0</b>	<b>4680507</b>	<b>0</b>	<b>493</b>
	<b>32-2406-01-789-17-SOON-20-OTHER CHARGES</b>									
1	Executive Director Solan (DDO Code-974)	0	0	0	0	0	0	0	0	0
2	DPO IDP Sirmour at Nahan (DDO Code-977)	7587500	5513496	2074004	7587500	5513496	2074004	7587500	0	0
3	DPO IDP Solan (DDO Code-978)	26483288	17557386	8925900	26483286	17557386	8925900	26483286	0	2
4	DPO IDP Bilaspur (DDO Code-979)	17027030	13867871	3153789	17021660	13867871	3153789	17021660	0	5370
5	DPO IDP Shimla (DDO Code-980)	6100000	4499971	1600029	6100000	4499971	1600029	6100000	0	0
6	DPO IDP Kullu (DDO Code-981)	0	0	0	0	0	0	0	0	0
7	DPO IDP Mandi (DDO Code-982)	3004200	1878345	1125855	3004200	1878345	1125855	3004200	0	0
8	DPO IDP Hamirpur (DDO Code-983)	18926100	10800000	8126100	18926100	10800000	8126100	18926100	0	0
9	DPO IDP Una (DDO Code-984)	11221072	11221072	0	11221072	11221072	0	11221072	0	0
10	DPO IDP Kangra at D/Shala (DDO Code-985)	22797000	1642403	21154597	22797000	1642403	21154597	22797000	0	0
11	DPO IDP Chamba (DDO Code-986)	491810	131532	359987	491519	131532	359987	491519	0	291
	<b>TOTAL(20)-OTHER CHARGES</b>	<b>113638000</b>	<b>67112076</b>	<b>46520261</b>	<b>113632337</b>	<b>67112076</b>	<b>46520261</b>	<b>113632337</b>	<b>0</b>	<b>5663</b>
	<b>32-2406-01-789-17-SOON-21-MAINTENANCE</b>									
1	Executive Director Solan (DDO Code-974)	337300	0	101167	101167	0	101167	101167	0	236133
2	DPO IDP Sirmour at Nahan (DDO Code-977)	25000	0	25000	25000	0	25000	25000	0	0
3	DPO IDP Solan (DDO Code-978)	227200	0	227200	227200	227200	0	227200	0	0
4	DPO IDP Bilaspur (DDO Code-979)	125500	0	0	0	0	0	0	0	125500
5	DPO IDP Shimla (DDO Code-980)	0	0	0	0	0	0	0	0	0
6	DPO IDP Kullu (DDO Code-981)	0	0	0	0	0	0	0	0	0
7	DPO IDP Mandi (DDO Code-982)	1521000	0	1521000	1521000	0	1521000	1521000	0	0
8	DPO IDP Hamirpur (DDO Code-983)	50000	0	50000	50000	0	50000	50000	0	0
9	DPO IDP Una (DDO Code-984)	135100	0	135100	135100	0	135100	135100	0	0
10	DPO IDP Kangra at D/Shala (DDO Code-985)	1723500	0	1723500	1723500	0	1723500	1723500	0	0
11	DPO IDP Chamba (DDO Code-986)	855400	0	853275	853275	0	853275	853275	0	2125
	<b>TOTAL(21)-MAINTENANCE</b>	<b>5000000</b>	<b>0</b>	<b>4636242</b>	<b>4636242</b>	<b>227200</b>	<b>4409042</b>	<b>4636242</b>	<b>0</b>	<b>363758</b>
	<b>32-2406-01-789-17-SOON-33-MATERIAL &amp; SUPPLY</b>									
1	Executive Director Solan (DDO Code-974)	0	0	0	0	0	0	0	0	0
2	DPO IDP Sirmour at Nahan (DDO Code-977)	298969	298969	0	298969	298969	0	298969	0	0
3	DPO IDP Solan (DDO Code-978)	499731	499015	0	499015	499015	0	499015	0	716
4	DPO IDP Bilaspur (DDO Code-979)	495985	495985	0	495985	495985	0	495985	0	0
5	DPO IDP Shimla (DDO Code-980)	0	0	0	0	0	0	0	0	0
6	DPO IDP Kullu (DDO Code-981)	0	0	0	0	0	0	0	0	0
7	DPO IDP Mandi (DDO Code-982)	0	0	0	0	0	0	0	0	0
8	DPO IDP Hamirpur (DDO Code-983)	0	0	0	0	0	0	0	0	0
9	DPO IDP Una (DDO Code-984)	497829	497829	0	497829	497829	0	497829	0	0
10	DPO IDP Kangra at D/Shala (DDO Code-985)	488510	488510	0	488510	488510	0	488510	0	0
11	DPO IDP Chamba (DDO Code-986)	399976	399976	0	399976	399976	0	399976	0	0
	<b>TOTAL (33)-MATERIAL &amp; SUPPLY</b>	<b>2681000</b>	<b>2680284</b>	<b>0</b>	<b>2680284</b>	<b>2680284</b>	<b>0</b>	<b>2680284</b>	<b>0</b>	<b>716</b>



Sl. No.	BUDGET SUB HEAD	EXPENDITURE AS PER DDOs OF IDP,SOLAN				EXPENDITURE AS PER TREASURY CTR			VARIATION (Col. 6 & 9)	VARIATION (Allotment minus Expd. Col. 3 minus Col.9)
		ALLOTMENT	TOTAL UPTO PREVIOUS MONTH	TOTAL BOOKING DURING THE MONTH	TOTAL	TOTAL UPTO PREVIOUS MONTH	TOTAL BOOKING DURING THE MONTH	TOTAL		
1	2	3	4	5	6	7	8	9	10	11
	<b>32-2406-01-789-17-SOON-42-GRANT in AID</b>									
1	Executive Director Solan (DDO Code-974)	0	0	0	0	0	0	0	0	0
2	DPO IDP Sirmour at Nahan (DDO Code-977)	0	0	0	0	0	0	0	0	0
3	DPO IDP Solan (DDO Code-978)	0	0	0	0	0	0	0	0	0
4	DPO IDP Bilaspur (DDO Code-979)	0	0	0	0	0	0	0	0	0
5	DPO IDP Shimla (DDO Code-980)	0	0	0	0	0	0	0	0	0
6	DPO IDP Kullu (DDO Code-981)	0	0	0	0	0	0	0	0	0
7	DPO IDP Mandi (DDO Code-982)	0	0	0	0	0	0	0	0	0
8	DPO IDP Hamirpur (DDO Code-983)	0	0	0	0	0	0	0	0	0
9	DPO IDP Una (DDO Code-984)	0	0	0	0	0	0	0	0	0
10	DPO IDP Kangra at D/Shala (DDO Code-985)	0	0	0	0	0	0	0	0	0
11	DPO IDP Chamba (DDO Code-986)	0	0	0	0	0	0	0	0	0
	<b>TOTAL (42)-GRANT IN AID</b>	<b>0</b>	<b>0</b>	<b>0</b>	<b>0</b>	<b>0</b>	<b>0</b>	<b>0</b>	<b>0</b>	<b>0</b>
	<b>TOTAL S.C.S.P.</b>									
1	Executive Director Solan (DDO Code-974)	337300	0	101167	101167	0	101167	101167	0	236133
2	DPO IDP Sirmour at Nahan (DDO Code-977)	8810550	6711546	2099004	8810550	6711546	2099004	8810550	0	0
3	DPO IDP Solan (DDO Code-978)	28209601	19055290	9153100	28208390	19282490	8925900	28208390	0	1211
4	DPO IDP Bilaspur (DDO Code-979)	17648515	14363856	3153789	17517645	14363856	3153789	17517645	0	130870
5	DPO IDP Shimla (DDO Code-980)	6100000	4499971	1600029	6100000	4499971	1600029	6100000	0	0
6	DPO IDP Kullu (DDO Code-981)	0	0	0	0	0	0	0	0	0
7	DPO IDP Mandi (DDO Code-982)	5344930	2698075	2646855	5344930	2698075	2646855	5344930	0	0
8	DPO IDP Hamirpur (DDO Code-983)	18976100	10800000	8176100	18976100	10800000	8176100	18976100	0	0
9	DPO IDP Una (DDO Code-984)	12839018	12703918	135100	12839018	12703918	135100	12839018	0	0
10	DPO IDP Kangra at D/Shala (DDO Code-985)	25009010	2130913	22878097	25009010	2130913	22878097	25009010	0	0
11	DPO IDP Chamba (DDO Code-986)	2724976	1509298	1213262	2722560	1509298	1213262	2722560	0	2416
	<b>TOAL S.C.S.P.</b>	<b>126000000</b>	<b>74472867</b>	<b>51156503</b>	<b>125629370</b>	<b>74700067</b>	<b>50929303</b>	<b>125629370</b>	<b>0</b>	<b>370630</b>
	<b>GRAND TOTAL DEMAND NO. 16 AND 32.</b>									
1	Executive Director Solan (DDO Code-974)	83131042	60420453	14427201	74847654	60420453	14427201	74847654	0	8283388
2	DPO IDP Sirmour at Nahan (DDO Code-977)	73463367	33646617	39816709	73463326	33646617	39816709	73463326	0	41
3	DPO IDP Solan (DDO Code-978)	110616935	55505607	55109955	110615562	55732807	54882755	110615562	0	1373
4	DPO IDP Bilaspur (DDO Code-979)	39282358	29116685	9723361	38840046	29116685	9723361	38840046	0	442312
5	DPO IDP Shimla (DDO Code-980)	51818377	11005765	40812514	51818279	11005765	40812514	51818279	0	98
6	DPO IDP Kullu (DDO Code-981)	22664704	8317870	14346506	22664376	8317870	14346506	22664376	0	328
7	DPO IDP Mandi (DDO Code-982)	37973293	18247607	19725530	37973137	18247607	19725530	37973137	0	156
8	DPO IDP Hamirpur (DDO Code-983)	96068775	56701454	39367237	96068691	56701454	39367237	96068691	0	84
9	DPO IDP Una (DDO Code-984)	75671150	47644610	28026373	75670983	47644610	28026373	75670983	0	167
10	DPO IDP Kangra at D/Shala (DDO Code-985)	92998904	28999361	63999315	92998676	28999361	63999315	92998676	0	228
11	DPO IDP Chamba (DDO Code-986)	16311095	8760457	7547491	16307948	8760457	7547491	16307948	0	3147
	<b>G/TOTAL INTEGRATED PROJECT (IDP)</b>	<b>700000000</b>	<b>358366486</b>	<b>332902192</b>	<b>691268678</b>	<b>358593686</b>	<b>332674992</b>	<b>691268678</b>	<b>0</b>	<b>8731322</b>

CHIEF PROJECT DIRECTOR  
IDP,SOLAN

## Head Of Account Wise DDO Expenditure/Bills

From 01/03/2021 to 31/03/2021

DDO Discription :

SOL00-974-EXECUTIVE DIRECTOR,CPD, IDP SOLAN

Head Of Account : 16-2406-01-102-37-S00N-01-P-V-SALARIES

Scheme Total : 935617.00 ✓

Sub Vch Dt	Sub Vch No	Bill No	Gross	TODed	AGDed	NetAmt
01/03/2021	000008	SOL00974022021-001	349715.00 /	84247.00	65120.00	200348.00
01/03/2021	000009	SOL00974022021-002	259412.00 /	86966.00	120.00	172326.00
01/03/2021	000010	SOL00974022021-003	96928.00 /	3879.00	48000.00	45049.00
01/03/2021	000011	SOL00974022021-004	118544.00 /	10990.00	0.00	107554.00
04/03/2021	000026	SOL009742020100202	2631.00 /	247.00	0.00	2384.00
04/03/2021	000027	SOL009742020100203	768.00 /	71.00	0.00	697.00
05/03/2021	000031	SOL009742020100206	93801.00 /	12200.00	0.00	81601.00
06/03/2021	000038	SOL009742020100208	7458.00 /	0.00	0.00	7458.00
19/03/2021	000128	SOL009742020100216	6360.00 /	588.00	0.00	5772.00

Head Of Account : 16-2406-01-102-37-S00N-03-P-V-TRAVEL EXPENSES

Scheme Total : 7859.00 ✓

Sub Vch Dt	Sub Vch No	Bill No	Gross	TODed	AGDed	NetAmt
30/03/2021	000309	SOL009742020100225	2990.00 /	0.00	0.00	2990.00
30/03/2021	000323	SOL009742020100232	4869.00 /	0.00	0.00	4869.00

Head Of Account : 16-2406-01-102-37-S00N-05-P-V-OFFICE EXPENSES

Scheme Total : 202263.00 ✓

Sub Vch Dt	Sub Vch No	Bill No	Gross	TODed	AGDed	NetAmt
05/03/2021	000032	SOL009742020100201	3107.00 /	0.00	0.00	3107.00
08/03/2021	000043	SOL009742020100198	32232.00 /	0.00	0.00	32232.00
17/03/2021	000092	SOL009742020100215	28658.00 /	0.00	0.00	28658.00
24/03/2021	000191	SOL009742020100219	52212.00 /	0.00	0.00	52212.00
25/03/2021	000201	SOL009742020100220	31998.00 /	0.00	0.00	31998.00
26/03/2021	000273	SOL009742020100221	36601.00 /	0.00	0.00	36601.00
30/03/2021	000314	SOL009742020100231	17455.00 /	0.00	0.00	17455.00

Head Of Account : 16-2406-01-102-37-S00N-06-P-V-MEDICAL REIMBURSEMENT

Scheme Total : 557.00 ✓

Sub Vch Dt	Sub Vch No	Bill No	Gross	TODed	AGDed	NetAmt
08/03/2021	000045	SOL009742020100212	557.00 /	0.00	0.00	557.00

Head Of Account : 16-2406-01-102-37-S00N-09-P-V-ADVERTISING & PUBLICITY

Scheme Total : 5511.00 ✓

Sub Vch Dt	Sub Vch No	Bill No	Gross	TODed	AGDed	NetAmt
03/03/2021	000015	SOL009742020100204	5511.00 /	0.00	0.00	5511.00

Head Of Account : 16-2406-01-102-37-S00N-11-P-V-FURNISHINGS

Scheme Total : 24310.00 ✓

Sub Vch Dt	Sub Vch No	Bill No	Gross	TODed	AGDed	NetAmt
31/03/2021	000379	SOL009742020100233	24310.00 /	0.00	0.00	24310.00

Head Of Account : 16-2406-01-102-37-S00N-20-P-V-OTHER CHARGES

Scheme Total : 162429.00 ✓

Sub Vch Dt	Sub Vch No	Bill No	Gross	TODed	AGDed	NetAmt
03/03/2021	000012	SOL009742020100200	39517.00 ✓	0.00	0.00	39517.00

# Head Of Account Wise DDO Expenditure/Bills

From 01/03/2021 to 31/03/2021

Head Of Account : 16-2406-01-102-37-S00N-20-P-V-OTHER CHARGES

Sub Vch Dt	Sub Vch No	Bill No	Gross	TODed	AGDed	NetAmt
19/03/2021	000123	SOL009742020100214	9366.00 ✓	0.00	0.00	9366.00
30/03/2021	000322	SOL009742020100236	8584.00 ✓	0.00	0.00	8584.00
30/03/2021	000350	SOL009742020100240	5162.00 ✓	0.00	0.00	5162.00
31/03/2021	000383	SOL009742020100235	99800.00 ✓	0.00	0.00	99800.00

Scheme Total : 162429.00

Head Of Account : 16-2406-01-102-37-S00N-21-P-V-MAINTENANCE

Sub Vch Dt	Sub Vch No	Bill No	Gross	TODed	AGDed	NetAmt
05/03/2021	000028	SOL009742020100205	42819.00 ✓	0.00	0.00	42819.00
26/03/2021	000244	SOL009742020100224	50083.00 ✓	0.00	0.00	50083.00
26/03/2021	000269	SOL009742020100222	44839.00 ✓	0.00	0.00	44839.00
26/03/2021	000284	SOL009742020100223	98676.00 ✓	881.00	0.00	97795.00
30/03/2021	000315	SOL009742020100237	14864.00 ✓	0.00	0.00	14864.00
30/03/2021	000333	SOL009742020100234	98173.00 ✓	877.00	0.00	97296.00
31/03/2021	000377	SOL009742020100239	105235.00 ✓	0.00	0.00	105235.00
31/03/2021	000378	SOL009742020100244	314845.00 ✓	8004.00	0.00	306841.00

Scheme Total : 769534.00 ✓

Head Of Account : 16-2406-01-102-37-S00N-30-P-V-MOTOR VEHICLES (OUTSOURCED VEHICLES/POL/Repairs)

Sub Vch Dt	Sub Vch No	Bill No	Gross	TODed	AGDed	NetAmt
03/03/2021	000013	SOL009742020100199	172109.00 ✓	6116.00	0.00	165993.00
06/03/2021	000036	SOL009742020100209	11166.00 ✓	0.00	0.00	11166.00
08/03/2021	000039	SOL009742020100210	7750.00 ✓	0.00	0.00	7750.00
08/03/2021	000040	SOL009742020100213	17001.00 ✓	0.00	0.00	17001.00
17/03/2021	000096	SOL009742020000003	1453.00 ✓	0.00	0.00	1453.00
22/03/2021	000130	SOL009742020100217	162589.00 ✓	6116.00	0.00	156473.00
22/03/2021	000131	SOL009742020100218	12252.00 ✓	0.00	0.00	12252.00
26/03/2021	000243	SOL009742020100226	9824.00 ✓	0.00	0.00	9824.00

Scheme Total : 394144.00 ✓

Head Of Account : 32-2406-01-789-17-S00N-21-P-V-MAINTENANCE

Sub Vch Dt	Sub Vch No	Bill No	Gross	TODed	AGDed	NetAmt
30/03/2021	000331	SOL009742020100242	101167.00 ✓	0.00	0.00	101167.00

Scheme Total : 101167.00 ✓

Head Of Account : 16-2406-01-102-37-S00N-64-P-V-TRANSFER EXPENSES

Sub Vch Dt	Sub Vch No	Bill No	Gross	TODed	AGDed	NetAmt
30/03/2021	000303	SOL009742020100243	5440.00 ✓	0.00	0.00	5440.00
30/03/2021	000332	SOL009742020100241	2130.00 ✓	0.00	0.00	2130.00

Scheme Total : 7570.00

Head Of Account : 16-2406-01-102-37-S00N-27-P-V-MOTOR VEHICLES (Purchase)

Sub Vch Dt	Sub Vch No	Bill No	Gross	TODed	AGDed	NetAmt
12/03/2021	000089	SOL009742020100211	941064.00 ✓	13004.00	0.00	928060.00
17/03/2021	000105	SOL009742020100197	5438843.00 ✓	82543.00	0.00	5356300.00
26/03/2021	000267	SOL009742020100228	898428.00 ✓	12290.00	0.00	886138.00

Scheme Total : 8297104.00 ✓

## Head Of Account Wise DDO Expenditure/Bills

From 01/03/2021 to 31/03/2021

Head Of Account : 16-2406-01-102-37-S00N-27-P-V-MOTOR VEHICLES (Purchase)

Sub Vch Dt	Sub Vch No	Bill No	Gross	TODed	AGDed	NetAmt
26/03/2021	000268	SOL009742020100229	1018769.00 /	14052.00	0.00	1004717.00

Scheme Total : 8297104.00

Head Of Account : 16-2406-01-102-37-S00N-65-P-V-REMUNERATION TO OUTSOURCE EMPLOYEES

Sub Vch Dt	Sub Vch No	Bill No	Gross	TODed	AGDed	NetAmt
06/03/2021	000037	SOL009742020100207	3519136.00 /	0.00	0.00	3519136.00

Scheme Total : 3519136.00



## Head Of Account Wise DDO Expenditure/Bills

From 01/03/2021 to 31/03/2021

DDO Description :

SMR00-977-DISTRICT PROJECT OFFICER SIRMOUR

Head Of Account : 29-2071-01-104-02-S00N-38-N-V-PENSIONS

Scheme Total : 1000000.00

Sub Vch Dt	Sub Vch No	Bill No	Gross	TODed	AGDed	NetAmt
06/03/2021	000014	SMR009772020100086	1000000.00	0.00	0.00	1000000.00

Head Of Account : 29-2071-01-115-01-S00N-38-N-V-PENSIONS

Scheme Total : 1234890.00

Sub Vch Dt	Sub Vch No	Bill No	Gross	TODed	AGDed	NetAmt
06/03/2021	000011	SMR009772020100087	1234890.00	0.00	0.00	1234890.00

Head Of Account : 16-2406-01-102-37-S00N-01-P-V-SALARIES

Scheme Total : 592922.00 ✓

Sub Vch Dt	Sub Vch No	Bill No	Gross	TODed	AGDed	NetAmt
01/03/2021	000001	SMR00977022021-001	113575.00	60863.00	25000.00	27712.00
01/03/2021	000002	SMR00977022021-002	268208.00	26989.00	100050.00	141169.00
01/03/2021	000003	SMR00977022021-003	211139.00	27945.00	0.00	183194.00

Head Of Account : 16-2406-01-102-37-S00N-02-P-V-WAGES

Scheme Total : 906.00 ✓

Sub Vch Dt	Sub Vch No	Bill No	Gross	TODed	AGDed	NetAmt
30/03/2021	000246	SMR009772020100102	906.00	0.00	0.00	906.00

Head Of Account : 16-2406-01-102-37-S00N-03-P-V-TRAVEL EXPENSES

Scheme Total : 1321.00 ✓

Sub Vch Dt	Sub Vch No	Bill No	Gross	TODed	AGDed	NetAmt
22/03/2021	000207	SMR009772020100095	1321.00	0.00	0.00	1321.00

Head Of Account : 16-2406-01-102-37-S00N-05-P-V-OFFICE EXPENSES

Scheme Total : 33472.00 ✓

Sub Vch Dt	Sub Vch No	Bill No	Gross	TODed	AGDed	NetAmt
18/03/2021	000108	SMR009772020100091	1887.00	0.00	0.00	1887.00
22/03/2021	000209	SMR009772020100093	4636.00	0.00	0.00	4636.00
22/03/2021	000210	SMR009772020100092	12430.00	0.00	0.00	12430.00
23/03/2021	000220	SMR009772020100100	14519.00	0.00	0.00	14519.00

Head Of Account : 16-2406-01-102-37-S00N-06-P-V-MEDICAL REIMBURSEMENT

Scheme Total : 34564.00 ✓

Sub Vch Dt	Sub Vch No	Bill No	Gross	TODed	AGDed	NetAmt
22/03/2021	000208	SMR009772020100094	34564.00	0.00	0.00	34564.00

Head Of Account : 16-2406-01-102-37-S00N-20-P-V-OTHER CHARGES

Scheme Total : 37054520.00 ✓

Sub Vch Dt	Sub Vch No	Bill No	Gross	TODed	AGDed	NetAmt
01/03/2021	000013	SMR009772020100085	892842.00	26610.00	0.00	866232.00
17/03/2021	000100	SMR009772020100089	1103968.00	25563.00	0.00	1078405.00
17/03/2021	000102	SMR009772020100090	1398027.00	20200.00	0.00	1377827.00
23/03/2021	000213	SMR009772020100101	209390.00	0.00	0.00	209390.00
23/03/2021	000216	SMR009772020100099	54909.00	0.00	0.00	54909.00
23/03/2021	000217	SMR009772020100096	2105156.00	73969.00	0.00	2031187.00
26/03/2021	000226	SMR009772020100104	4148071.00	116663.00	0.00	4031408.00

## Head Of Account Wise DDO Expenditure/Bills

From 01/03/2021 to 31/03/2021

Head Of Account : 16-2406-01-102-37-S00N-20-P-V-OTHER CHARGES

Scheme Total : 37054520.00

Sub Vch Dt	Sub Vch No	Bill No	Gross	TODed	AGDed	NetAmt
26/03/2021	000227	SMR009772020100105	6060806.00	181830.00	0.00	5878976.00
26/03/2021	000228	SMR009772020100106	5938484.00	174540.00	0.00	5763944.00
26/03/2021	000229	SMR009772020100107	4881712.00	146454.00	0.00	4735258.00
31/03/2021	000272	SMR009772020100109	5427411.00	162816.00	0.00	5264595.00
31/03/2021	000273	SMR009772020100108	4833744.00	148445.00	0.00	4685299.00

Head Of Account : 32-2406-01-789-17-S00N-20-P-V-OTHER CHARGES

Scheme Total : 2074004.00

Sub Vch Dt	Sub Vch No	Bill No	Gross	TODed	AGDed	NetAmt
23/03/2021	000218	SMR009772020100097	1617546.00	48525.00	0.00	1569021.00
25/03/2021	000223	SMR009772020100103	456458.00	13722.00	0.00	442736.00

Head Of Account : 32-2406-01-789-17-S00N-21-P-V-MAINTENANCE

Scheme Total : 25000.00

Sub Vch Dt	Sub Vch No	Bill No	Gross	TODed	AGDed	NetAmt
23/03/2021	000219	SMR009772020100098	25000.00	0.00	0.00	25000.00

Head Of Account : 00-8009-01-101-02-S00N-47-N-V-ADVANCES

Scheme Total : 6037584.00

Sub Vch Dt	Sub Vch No	Bill No	Gross	TODed	AGDed	NetAmt
02/03/2021	000008	SMR009772020100084	6037584.00	0.00	0.00	6037584.00

## Head Of Account Wise DDO Expenditure/Bills

From 01/03/2021 to 31/03/2021

DDO Description : SOL00-978-DISTRICT PROJECT OFFICER SOLAN

Head Of Account : 16-2406-01-102-37-S00N-01-P-V-SALARIES

Scheme Total : 516131.00 ✓

Sub Vch Dt	Sub Vch No	Bill No	Gross	TODed	AGDed	NetAmt
01/03/2021	000003	SOL00978022021-001	445972.00	33646.00	100000.00	312326.00
01/03/2021	000004	SOL00978022021-002	70159.00	6374.00	0.00	63785.00

Head Of Account : 16-2406-01-102-37-S00N-05-P-V-OFFICE EXPENSES

Scheme Total : 114086.00 ✓

Sub Vch Dt	Sub Vch No	Bill No	Gross	TODed	AGDed	NetAmt
23/03/2021	000179	SOL009782020100187	15218.00	0.00	0.00	15218.00
26/03/2021	000257	SOL009782020100195	21964.00	0.00	0.00	21964.00
26/03/2021	000258	SOL009782020100199	2700.00	0.00	0.00	2700.00
26/03/2021	000260	SOL009782020100191	340.00	0.00	0.00	340.00
26/03/2021	000266	SOL009782020100197	68884.00	0.00	0.00	68884.00
26/03/2021	000277	SOL009782020100189	4980.00	0.00	0.00	4980.00

Head Of Account : 16-2406-01-102-37-S00N-20-P-V-OTHER CHARGES

Scheme Total : 44776038.00 ✓

Sub Vch Dt	Sub Vch No	Bill No	Gross	TODed	AGDed	NetAmt
04/03/2021	000022	SOL009782020100186	86700.00	867.00	0.00	85833.00
25/03/2021	000203	SOL009782020100204	843107.00	8431.00	0.00	834676.00
26/03/2021	000224	SOL009782020100264	407201.00	12216.00	0.00	394985.00
26/03/2021	000225	SOL009782020100265	1352383.00	40572.00	0.00	1311811.00
30/03/2021	000286	SOL009782020100262	1141342.00	34240.00	0.00	1107102.00
30/03/2021	000288	SOL009782020100261	531396.00	15942.00	0.00	515454.00
30/03/2021	000304	SOL009782020100243	377664.00	11330.00	0.00	366334.00
30/03/2021	000305	SOL009782020100238	942009.00	28260.00	0.00	913749.00
30/03/2021	000306	SOL009782020100240	491302.00	14739.00	0.00	476563.00
30/03/2021	000307	SOL009782020100241	1453846.00	43615.00	0.00	1410231.00
30/03/2021	000308	SOL009782020100242	484180.00	14526.00	0.00	469654.00
30/03/2021	000310	SOL009782020100245	853650.00	25610.00	0.00	828040.00
30/03/2021	000311	SOL009782020100247	481600.00	14448.00	0.00	467152.00
30/03/2021	000324	SOL009782020100246	378336.00	11350.00	0.00	366986.00
30/03/2021	000330	SOL009782020100244	491302.00	14739.00	0.00	476563.00
30/03/2021	000334	SOL009782020100248	671557.00	20147.00	0.00	651410.00
30/03/2021	000335	SOL009782020100249	1289191.00	38676.00	0.00	1250515.00
30/03/2021	000336	SOL009782020100250	481600.00	14448.00	0.00	467152.00
30/03/2021	000337	SOL009782020100251	182308.00	5469.00	0.00	176839.00
30/03/2021	000338	SOL009782020100256	481536.00	14446.00	0.00	467090.00
30/03/2021	000339	SOL009782020100234	1320009.00	39600.00	0.00	1280409.00
30/03/2021	000340	SOL009782020100236	1835521.00	55065.00	0.00	1780456.00
30/03/2021	000341	SOL009782020100232	2017440.00	60523.00	0.00	1956917.00
30/03/2021	000342	SOL009782020100227	5125332.00	153760.00	0.00	4971572.00
30/03/2021	000343	SOL009782020100223	2167534.00	65026.00	0.00	2102508.00
30/03/2021	000344	SOL009782020100225	1863418.00	55902.00	0.00	1807516.00



## Head Of Account Wise DDO Expenditure/Bills

From 01/03/2021 to 31/03/2021

Head Of Account : 16-2406-01-102-37-S00N-20-P-V-OTHER CHARGES

Scheme Total : 44776038.00

Sub Vch Dt	Sub Vch No	Bill No	Gross	TODed	AGDed	NetAmt
30/03/2021	000345	SOL009782020100226	1645947.00	49378.00	0.00	1596569.00
30/03/2021	000346	SOL009782020100227	164373.00	4931.00	0.00	159442.00
30/03/2021	000347	SOL009782020100231	4149924.00	124497.00	0.00	4025427.00
30/03/2021	000348	SOL009782020100257	3295108.00	98853.00	0.00	3196255.00
30/03/2021	000349	SOL009782020100255	125850.00	1260.00	0.00	124590.00
31/03/2021	000384	SOL009782020100233	2272900.00	68187.00	0.00	2204713.00
31/03/2021	000385	SOL009782020100239	643453.00	19304.00	0.00	624149.00
31/03/2021	000386	SOL009782020100263	4562939.00	136888.00	0.00	4426051.00
31/03/2021	000387	SOL009782020100228	164080.00	4923.00	0.00	159157.00

Head Of Account : 16-2406-01-102-37-S00N-30-P-V-MOTOR VEHICLES (OUTSOURCED VEHICLES/POL/Repairs)

Scheme Total : 40000.00

Sub Vch Dt	Sub Vch No	Bill No	Gross	TODed	AGDed	NetAmt
25/03/2021	000200	SOL009782020100198	40000.00	1200.00	0.00	38800.00

Head Of Account : 16-2406-01-102-37-S00N-33-P-V-MATERIAL AND SUPPLY

Scheme Total : 510600.00

Sub Vch Dt	Sub Vch No	Bill No	Gross	TODed	AGDed	NetAmt
26/03/2021	000259	SOL009782020100192	255300.00	5106.00	0.00	250194.00
26/03/2021	000278	SOL009782020100193	255300.00	5106.00	0.00	250194.00

Head Of Account : 32-2406-01-789-17-S00N-20-P-V-OTHER CHARGES

Scheme Total : 8925900.00

Sub Vch Dt	Sub Vch No	Bill No	Gross	TODed	AGDed	NetAmt
04/03/2021	000021	SOL009782020100184	163208.00	1632.00	0.00	161576.00
04/03/2021	000023	SOL009782020100185	195020.00	1950.00	0.00	193070.00
04/03/2021	000024	SOL009782020100182	805100.00	24153.00	0.00	780947.00
04/03/2021	000025	SOL009782020100183	136620.00	1366.00	0.00	135254.00
26/03/2021	000245	SOL009782020100207	1351146.00	40534.00	0.00	1310612.00
26/03/2021	000246	SOL009782020100208	304595.00	9138.00	0.00	295457.00
26/03/2021	000247	SOL009782020100209	658829.00	19765.00	0.00	639064.00
26/03/2021	000248	SOL009782020100210	289983.00	8700.00	0.00	281283.00
26/03/2021	000249	SOL009782020100213	168784.00	5064.00	0.00	163720.00
26/03/2021	000250	SOL009782020100211	260658.00	7820.00	0.00	252838.00
26/03/2021	000251	SOL009782020100212	337026.00	10111.00	0.00	326915.00
26/03/2021	000252	SOL009782020100219	403800.00	12114.00	0.00	391686.00
26/03/2021	000253	SOL009782020100217	76843.00	2305.00	0.00	74538.00
26/03/2021	000254	SOL009782020100216	153686.00	4611.00	0.00	149075.00
26/03/2021	000255	SOL009782020100215	76843.00	2305.00	0.00	74538.00
26/03/2021	000256	SOL009782020100205	1399338.00	41980.00	0.00	1357358.00
26/03/2021	000275	SOL009782020100221	807740.00	24232.00	0.00	783508.00
26/03/2021	000276	SOL009782020100220	656770.00	19701.00	0.00	637069.00
26/03/2021	000283	SOL009782020100214	46106.00	1383.00	0.00	44723.00
31/03/2021	000376	SOL009782020100206	633805.00	19014.00	0.00	614791.00

# Head Of Account Wise DDO Expenditure/Bills

From 01/03/2021 to 31/03/2021

Head Of Account : 32-2406-01-789-17-S00N-21-P-V-MAINTENANCE

Scheme Total : 227200.00

Sub Vch Dt	Sub Vch No	Bill No	Gross	TODed	AGDed	NetAmt
30/03/2021	000287	SOL009782020100260	227200.00	2272.00	0.00	224928.00

10/10/10

.

.

.

.

## Head Of Account Wise DDO Expenditure/Bills

From 01/03/2021 to 31/03/2021

DDO Discription : BLP00-979-DISTRICT PROJECT OFFICER BILASPUR

Head Of Account : 16-2406-01-102-37-S00N-01-P-V-SALARIES

Scheme Total : 495340.00 ✓

Sub Vch Dt	Sub Vch No	Bill No	Gross	TODed	AGDed	NetAmt
01/03/2021	000020	BLP00979022021-001	103471.00	28518.00	55000.00	19953.00
01/03/2021	000021	BLP00979022021-002	248021.00	16448.00	92000.00	139573.00
01/03/2021	000022	BLP00979022021-003	143848.00	14396.00	0.00	129452.00

Head Of Account : 16-2406-01-102-37-S00N-05-P-V-OFFICE EXPENSES

Scheme Total : 102888.00 ✓

Sub Vch Dt	Sub Vch No	Bill No	Gross	TODed	AGDed	NetAmt
02/03/2021	000024	BLP009792020100187	3174.00	0.00	0.00	3174.00
02/03/2021	000025	BLP009792020100188	1850.00	0.00	0.00	1850.00
20/03/2021	000109	BLP009792020100200	12415.00	0.00	0.00	12415.00
20/03/2021	000110	BLP009792020100195	9236.00	0.00	0.00	9236.00
20/03/2021	000111	BLP009792020100196	8890.00	0.00	0.00	8890.00
20/03/2021	000112	BLP009792020100194	9843.00	0.00	0.00	9843.00
22/03/2021	000155	BLP009792020100202	9360.00	0.00	0.00	9360.00
22/03/2021	000156	BLP009792020100203	14950.00	0.00	0.00	14950.00
22/03/2021	000157	BLP009792020100204	13358.00	0.00	0.00	13358.00
24/03/2021	000186	BLP009792020100212	11039.00	0.00	0.00	11039.00
25/03/2021	000202	BLP009792020100197	8773.00	0.00	0.00	8773.00

Head Of Account : 16-2406-01-102-37-S00N-06-P-V-MEDICAL REIMBURSEMENT

Scheme Total : 58498.00 ✓

Sub Vch Dt	Sub Vch No	Bill No	Gross	TODed	AGDed	NetAmt
20/03/2021	000113	BLP009792020100193	2697.00	0.00	0.00	2697.00
22/03/2021	000153	BLP009792020100189	1360.00	0.00	0.00	1360.00
22/03/2021	000154	BLP009792020100190	54441.00	0.00	0.00	54441.00

Head Of Account : 16-2406-01-102-37-S00N-09-P-V-ADVERTISING & PUBLICITY

Scheme Total : 22141.00 ✓

Sub Vch Dt	Sub Vch No	Bill No	Gross	TODed	AGDed	NetAmt
24/03/2021	000187	BLP009792020100205	22141.00	0.00	0.00	22141.00

Head Of Account : 16-2406-01-102-37-S00N-20-P-V-OTHER CHARGES

Scheme Total : 5879305.00 ✓

Sub Vch Dt	Sub Vch No	Bill No	Gross	TODed	AGDed	NetAmt
19/03/2021	000107	BLP009792020100192	22210.00	0.00	0.00	22210.00
19/03/2021	000108	BLP009792020100191	20545.00	0.00	0.00	20545.00
26/03/2021	000206	BLP009792020100217	868459.00	32216.00	0.00	836243.00
26/03/2021	000207	BLP009792020100218	931756.00	34563.00	0.00	897193.00
26/03/2021	000208	BLP009792020100216	66000.00	2640.00	0.00	63360.00
30/03/2021	000292	BLP009792020100211	657000.00	24272.00	0.00	632728.00
30/03/2021	000293	BLP009792020100219	736823.00	27332.00	0.00	709491.00
30/03/2021	000294	BLP009792020100220	682769.00	25328.00	0.00	657441.00
31/03/2021	000299	BLP009792020100227	48240.00	0.00	0.00	48240.00
31/03/2021	000302	BLP009792020100225	44890.00	0.00	0.00	44890.00

## Head Of Account Wise DDO Expenditure/Bills

From 01/03/2021 to 31/03/2021

Head Of Account : 16-2406-01-102-37-S00N-20-P-V-OTHER CHARGES

Scheme Total : 5879305.00

Sub Vch Dt	Sub Vch No	Bill No	Gross	TODed	AGDed	NetAmt
31/03/2021	000303	BLP009792020100223	128730.00	0.00	0.00	128730.00
31/03/2021	000304	BLP009792020100234	133400.00	0.00	0.00	133400.00
31/03/2021	000305	BLP009792020100236	98195.00	0.00	0.00	98195.00
31/03/2021	000306	BLP009792020100237	210623.00	7818.00	0.00	202805.00
31/03/2021	000311	BLP009792020100232	132270.00	0.00	0.00	132270.00
31/03/2021	000312	BLP009792020100235	94500.00	0.00	0.00	94500.00
31/03/2021	000313	BLP009792020100233	145825.00	0.00	0.00	145825.00
31/03/2021	000314	BLP009792020100224	91660.00	0.00	0.00	91660.00
31/03/2021	000316	BLP009792020100230	4590.00	0.00	0.00	4590.00
31/03/2021	000317	BLP009792020100228	48265.00	0.00	0.00	48265.00
31/03/2021	000318	BLP009792020100221	712555.00	26434.00	0.00	686121.00

Scheme Total : 0.00

Head Of Account : 16-2406-01-102-37-S00N-30-P-V-MOTOR VEHICLES (OUTSOURCED VEHICLES/POL/Repairs)

Sub Vch Dt	Sub Vch No	Bill No	Gross	TODed	AGDed	NetAmt
17/03/2021	000076	BLP009792020000003	0.00	0.00	0.00	0.00

Head Of Account : 32-2406-01-789-17-S00N-20-P-V-OTHER CHARGES

Scheme Total : 3153789.00

Sub Vch Dt	Sub Vch No	Bill No	Gross	TODed	AGDed	NetAmt
24/03/2021	000185	BLP009792020100210	333334.00	12365.00	0.00	320969.00
30/03/2021	000291	BLP009792020100208	757431.00	28097.00	0.00	729334.00
30/03/2021	000295	BLP009792020100207	848646.00	31480.00	0.00	817166.00
30/03/2021	000296	BLP009792020100206	576013.00	21368.00	0.00	554645.00
30/03/2021	000298	BLP009792020100209	458235.00	16989.00	0.00	441246.00
31/03/2021	000300	BLP009792020100229	47150.00	0.00	0.00	47150.00
31/03/2021	000301	BLP009792020100231	5230.00	0.00	0.00	5230.00
31/03/2021	000315	BLP009792020100226	127750.00	0.00	0.00	127750.00

Head Of Account : 16-2406-01-102-37-S00N-64-P-V-TRANSFER EXPENSES

Scheme Total : 11400.00

Sub Vch Dt	Sub Vch No	Bill No	Gross	TODed	AGDed	NetAmt
30/03/2021	000297	BLP009792020100199	11400.00	0.00	0.00	11400.00

Head Of Account : 00-8009-01-101-02-S00N-47-N-V-ADVANCES

Scheme Total : 500000.00

Sub Vch Dt	Sub Vch No	Bill No	Gross	TODed	AGDed	NetAmt
25/03/2021	000167	BLP009792020100198	500000.00	0.00	0.00	500000.00

## Head Of Account Wise DDO Expenditure/Bills

From 01/03/2021 to 31/03/2021

DDO Description :

SML00-980-DISTRICT PROJECT OFFICER SHIMLA

Head Of Account : 16-2406-01-102-37-S00N-01-P-V-SALARIES

Scheme Total : 374370.00

Sub Vch Dt	Sub Vch No	Bill No	Gross	TODed	AGDed	NetAmt
01/03/2021	000056	SML00980022021-001	107236.00	120.00	60000.00	47116.00
01/03/2021	000057	SML00980022021-002	62955.00	13530.00	25000.00	24425.00
01/03/2021	000058	SML00980022021-003	134976.00	17894.00	0.00	117082.00
01/03/2021	000059	SML00980022021-004	69203.00	1142.00	25000.00	43061.00

Head Of Account : 16-2406-01-102-37-S00N-05-P-V-OFFICE EXPENSES

Scheme Total : 70063.00

Sub Vch Dt	Sub Vch No	Bill No	Gross	TODed	AGDed	NetAmt
12/03/2021	000328	SML009802020100215	1507.00	0.00	0.00	1507.00
22/03/2021	000529	SML009802020100231	7611.00	0.00	0.00	7611.00
25/03/2021	000652	SML009802020100233	1397.00	0.00	0.00	1397.00
25/03/2021	000653	SML009802020100235	1120.00	0.00	0.00	1120.00
25/03/2021	000654	SML009802020100234	3100.00	0.00	0.00	3100.00
26/03/2021	000848	SML009802020100298	24990.00	0.00	0.00	24990.00
30/03/2021	000907	SML009802020100320	364.00	0.00	0.00	364.00
30/03/2021	001016	SML009802020100264	3174.00	0.00	0.00	3174.00
30/03/2021	001017	SML009802020100263	26800.00	0.00	0.00	26800.00

Head Of Account : 16-2406-01-102-37-S00N-06-P-V-MEDICAL REIMBURSEMENT

Scheme Total : 327802.00

Sub Vch Dt	Sub Vch No	Bill No	Gross	TODed	AGDed	NetAmt
22/03/2021	000540	SML009802020100216	327802.00	0.00	0.00	327802.00

Head Of Account : 16-2406-01-102-37-S00N-20-P-V-OTHER CHARGES

Scheme Total : 38431250.00

Sub Vch Dt	Sub Vch No	Bill No	Gross	TODed	AGDed	NetAmt
12/03/2021	000327	SML009802020100214	2904.00	0.00	0.00	2904.00
22/03/2021	000527	SML009802020100226	572597.00	17178.00	0.00	555419.00
22/03/2021	000528	SML009802020100228	853965.00	25619.00	0.00	828346.00
22/03/2021	000530	SML009802020100232	440250.00	13208.00	0.00	427042.00
22/03/2021	000532	SML009802020100218	710609.00	21318.00	0.00	689291.00
22/03/2021	000533	SML009802020100219	666868.00	20007.00	0.00	646861.00
22/03/2021	000534	SML009802020100221	72600.00	2178.00	0.00	70422.00
22/03/2021	000535	SML009802020100220	205464.00	6164.00	0.00	199300.00
22/03/2021	000536	SML009802020100222	86100.00	2583.00	0.00	83517.00
22/03/2021	000537	SML009802020100223	188480.00	5655.00	0.00	182825.00
22/03/2021	000538	SML009802020100224	771616.00	23148.00	0.00	748468.00
22/03/2021	000539	SML009802020100225	734856.00	22046.00	0.00	712810.00
25/03/2021	000636	SML009802020100245	309200.00	9276.00	0.00	299924.00
25/03/2021	000637	SML009802020100253	420970.00	12629.00	0.00	408341.00
25/03/2021	000638	SML009802020100252	1180259.00	35408.00	0.00	1144851.00
25/03/2021	000639	SML009802020100251	420450.00	12614.00	0.00	407836.00
25/03/2021	000640	SML009802020100250	30096.00	903.00	0.00	29193.00

## Head Of Account Wise DDO Expenditure/Bills

From 01/03/2021 to 31/03/2021

Head Of Account : 16-2406-01-102-37-S00N-20-P-V-OTHER CHARGES

Scheme Total : 38431250.00

Sub Vch Dt	Sub Vch No	Bill No	Gross	TODed	AGDed	NetAmt
25/03/2021	000641	SML009802020100249	401680.00	12051.00	0 00	389629.00
25/03/2021	000642	SML009802020100248	323780.00	9714.00	0.00	314066.00
25/03/2021	000643	SML009802020100247	418000.00	12540.00	0.00	405460.00
25/03/2021	000644	SML009802020100246	259350.00	7779.00	0.00	251571.00
25/03/2021	000645	SML009802020100229	102050.00	3062.00	0.00	98988.00
25/03/2021	000646	SML009802020100244	365886.00	10977.00	0 00	354909.00
25/03/2021	000647	SML009802020100254	1395473.00	41864.00	0 00	1353609.00
25/03/2021	000648	SML009802020100255	691196.00	20736.00	0.00	670460.00
25/03/2021	000649	SML009802020100241	1409810.00	42294.00	0.00	1367516.00
25/03/2021	000650	SML009802020100242	1350330.00	40510.00	0 00	1309820.00
25/03/2021	000651	SML009802020100243	666730.00	20002.00	0 00	646728.00
25/03/2021	000655	SML009802020100236	371797.00	11154.00	0 00	360643.00
25/03/2021	000656	SML009802020100237	320867.00	9626.00	0 00	311241.00
25/03/2021	000657	SML009802020100238	227562.00	6827.00	0.00	220735.00
25/03/2021	000658	SML009802020100239	75522.00	2265.00	0.00	73257.00
26/03/2021	000822	SML009802020100240	816308.00	24489.00	0.00	791819.00
26/03/2021	000845	SML009802020100295	32595.00	978.00	0 00	31617.00
26/03/2021	000846	SML009802020100296	69165.00	692.00	0.00	68473.00
26/03/2021	000847	SML009802020100297	65455.00	1965.00	0.00	63490.00
26/03/2021	000849	SML009802020100299	8800.00	88.00	0.00	8712.00
26/03/2021	000850	SML009802020100300	62010.00	620.00	0.00	61390.00
26/03/2021	000851	SML009802020100302	62805.00	628.00	0 00	62177.00
26/03/2021	000852	SML009802020100303	74465.00	745.00	0.00	73720.00
26/03/2021	000853	SML009802020100304	61215.00	612.00	0.00	60603.00
30/03/2021	000898	SML009802020100323	26444.00	792.00	0.00	25652.00
30/03/2021	000899	SML009802020100293	67310.00	2019.00	0.00	65291.00
30/03/2021	000900	SML009802020100329	2098.00	210.00	0.00	1888.00
30/03/2021	000903	SML009802020100328	31000.00	930.00	0.00	30070.00
30/03/2021	000904	SML009802020100330	49275.00	1479.00	0.00	47796.00
30/03/2021	000905	SML009802020100314	61215.00	612.00	0 00	60603.00
30/03/2021	000906	SML009802020100315	61800.00	0.00	0.00	61800.00
30/03/2021	000908	SML009802020100322	216495.00	2165.00	0.00	214330.00
30/03/2021	000909	SML009802020100325	7425.00	0.00	0.00	7425.00
30/03/2021	000910	SML009802020100331	2400.00	0.00	0.00	2400.00
30/03/2021	000911	SML009802020100294	72080.00	2163.00	0.00	69917.00
30/03/2021	000912	SML009802020100292	52205.00	522.00	0.00	51683.00
30/03/2021	000913	SML009802020100291	51675.00	0.00	0.00	51675.00
30/03/2021	000914	SML009802020100276	55650.00	1670.00	0.00	53980.00
30/03/2021	000915	SML009802020100274	24910.00	0.00	0.00	24910.00
30/03/2021	000916	SML009802020100301	58830.00	588.00	0 00	58242.00
30/03/2021	000917	SML009802020100313	60950.00	0.00	0.00	60950.00
30/03/2021	000918	SML009802020100312	60950.00	0.00	0.00	60950.00

## Head Of Account Wise DDO Expenditure/Bills

From 01/03/2021 to 31/03/2021

Head Of Account : 16-2406-01-102-37-S00N-20-P-V-OTHER CHARGES

Scheme Total : 38431250.00

Sub Vch Dt	Sub Vch No	Bill No	Gross	TODed	AGDed	NetAmt
30/03/2021	000919	SML009802020100311	62805.00	0.00	0.00	62805.00
30/03/2021	000920	SML009802020100310	61745.00	0.00	0.00	61745.00
30/03/2021	000921	SML009802020100305	62275.00	623.00	0.00	61652.00
30/03/2021	000922	SML009802020100306	60420.00	0.00	0.00	60420.00
30/03/2021	000923	SML009802020100307	60950.00	610.00	0.00	60340.00
30/03/2021	000924	SML009802020100309	60950.00	0.00	0.00	60950.00
30/03/2021	000925	SML009802020100308	60950.00	610.00	0.00	60340.00
30/03/2021	000998	SML009802020100289	491894.00	14757.00	0.00	477137.00
30/03/2021	000999	SML009802020100290	1528250.00	45848.00	0.00	1482402.00
30/03/2021	001000	SML009802020100277	700571.00	21018.00	0.00	679553.00
30/03/2021	001001	SML009802020100279	737894.00	22137.00	0.00	715757.00
30/03/2021	001002	SML009802020100282	719167.00	21575.00	0.00	697592.00
30/03/2021	001003	SML009802020100283	726071.00	21782.00	0.00	704289.00
30/03/2021	001004	SML009802020100285	709874.00	21296.00	0.00	688578.00
30/03/2021	001005	SML009802020100284	726756.00	21803.00	0.00	704953.00
30/03/2021	001006	SML009802020100286	471858.00	14156.00	0.00	457702.00
30/03/2021	001007	SML009802020100287	484916.00	14547.00	0.00	470369.00
30/03/2021	001008	SML009802020100288	246386.00	7392.00	0.00	238994.00
30/03/2021	001009	SML009802020100271	745292.00	22359.00	0.00	722933.00
30/03/2021	001010	SML009802020100270	1494771.00	44843.00	0.00	1449928.00
30/03/2021	001011	SML009802020100269	747788.00	22434.00	0.00	725354.00
30/03/2021	001012	SML009802020100278	743683.00	22311.00	0.00	721372.00
30/03/2021	001014	SML009802020100266	280408.00	8412.00	0.00	271996.00
30/03/2021	001015	SML009802020100265	109080.00	3270.00	0.00	105810.00
30/03/2021	001018	SML009802020100262	346506.00	10395.00	0.00	336111.00
30/03/2021	001019	SML009802020100261	347697.00	10431.00	0.00	337266.00
30/03/2021	001020	SML009802020100260	346506.00	10395.00	0.00	336111.00
30/03/2021	001021	SML009802020100258	344937.00	10348.00	0.00	334589.00
30/03/2021	001022	SML009802020100259	342386.00	10272.00	0.00	332114.00
30/03/2021	001023	SML009802020100273	1491288.00	44739.00	0.00	1446549.00
30/03/2021	001024	SML009802020100267	1477165.00	44315.00	0.00	1432850.00
31/03/2021	001047	SML009802020100272	495317.00	14859.00	0.00	480458.00
31/03/2021	001048	SML009802020100281	679954.00	20399.00	0.00	659555.00
31/03/2021	001049	SML009802020100280	732913.00	21987.00	0.00	710926.00
31/03/2021	001050	SML009802020100268	1468980.00	44070.00	0.00	1424910.00

Head Of Account : 16-2406-01-102-37-S00N-30-P-V-MOTOR VEHICLES (OUTSOURCED VEHICLES/POL/Repairs)

Scheme Total : 9000.00

Sub Vch Dt	Sub Vch No	Bill No	Gross	TODed	AGDed	NetAmt
05/03/2021	000199	SML009802020100212	9000.00	0.00	0.00	9000.00
31/03/2021	001062	SML009802020000001	0.00	0.00	0.00	0.00



## Head Of Account Wise DDO Expenditure/Bills

From 01/03/2021 to 31/03/2021

Head Of Account : 32-2406-01-789-17-S00N-20-P-V-OTHER CHARGES

Scheme Total : 1600029.00

Sub Vch Dt	Sub Vch No	Bill No	Gross	TODed	AGDed	NetAmt
22/03/2021	000531	SML009802020100217	777331.00	23319.00	0.00	754012.00
30/03/2021	000901	SML009802020100318	7264.00	0.00	0.00	7264.00
30/03/2021	000902	SML009802020100319	26400.00	792.00	0.00	25608.00
30/03/2021	000927	SML009802020100317	96400.00	2892.00	0.00	93508.00
30/03/2021	001013	SML009802020100257	344937.00	10348.00	0.00	334589.00
31/03/2021	001046	SML009802020100256	347697.00	10431.00	0.00	337266.00

Head Of Account : 00-8658-00-101-08-S00N-00-N-V-

Scheme Total : 85527.00

Sub Vch Dt	Sub Vch No	Bill No	Gross	TODed	AGDed	NetAmt
04/03/2021	000015	SML009802020100213	85527.00	0.00	0.00	85527.00

## Head Of Account Wise DDO Expenditure/Bills

From 01/03/2021 to 31/03/2021

DDO Discription : KLU00-981-DISTRICT PROJECT OFFICER

Head Of Account : 16-2406-01-102-37-S00N-01-P-V-SALARIES

Scheme Total : 574320.00 ✓

Sub Vch Dt	Sub Vch No	Bill No	Gross	TODed	AGDed	NetAmt
01/03/2021	000034	KLU00981022021-001	116713.00	56712.00	60000.00	1.00
01/03/2021	000035	KLU00981022021-002	255003.00	10996.00	115005.00	129002.00
01/03/2021	000036	KLU00981022021-003	202604.00	18496.00	0.00	184108.00

Head Of Account : 16-2406-01-102-37-S00N-05-P-V-OFFICE EXPENSES

Scheme Total : 39802.00 ✓

Sub Vch Dt	Sub Vch No	Bill No	Gross	TODed	AGDed	NetAmt
17/03/2021	000180	KLU009812020100094	795.00	0.00	0.00	795.00
17/03/2021	000205	KLU009812020100090	6896.00	0.00	0.00	6896.00
17/03/2021	000206	KLU009812020100091	1199.00	0.00	0.00	1199.00
20/03/2021	000284	KLU009812020100102	7550.00	0.00	0.00	7550.00
20/03/2021	000285	KLU009812020100103	2462.00	0.00	0.00	2462.00
20/03/2021	000286	KLU009812020100104	3875.00	0.00	0.00	3875.00
20/03/2021	000287	KLU009812020100105	1375.00	0.00	0.00	1375.00
20/03/2021	000288	KLU009812020100106	9282.00	0.00	0.00	9282.00
23/03/2021	000344	KLU009812020100109	3430.00	0.00	0.00	3430.00
23/03/2021	000345	KLU009812020100108	2034.00	0.00	0.00	2034.00
26/03/2021	000498	KLU009812020100115	904.00	0.00	0.00	904.00

Head Of Account : 16-2406-01-102-37-S00N-20-P-V-OTHER CHARGES

Scheme Total : 13369216.00 ✓

Sub Vch Dt	Sub Vch No	Bill No	Gross	TODed	AGDed	NetAmt
17/03/2021	000207	KLU009812020100092	8460.00	0.00	0.00	8460.00
17/03/2021	000208	KLU009812020100093	14160.00	0.00	0.00	14160.00
20/03/2021	000289	KLU009812020100098	1432030.00	46549.00	0.00	1385481.00
20/03/2021	000290	KLU009812020100101	1869698.00	50082.00	0.00	1819616.00
23/03/2021	000349	KLU009812020100107	503400.00	15102.00	0.00	488298.00
23/03/2021	000350	KLU009812020100110	16500.00	0.00	0.00	16500.00
24/03/2021	000405	KLU009812020100111	1673625.00	44829.00	0.00	1628796.00
24/03/2021	000406	KLU009812020100113	3704202.00	113082.00	0.00	3591120.00
24/03/2021	000407	KLU009812020100114	4144590.00	111060.00	0.00	4033530.00
26/03/2021	000494	KLU009812020100116	2551.00	0.00	0.00	2551.00

Head Of Account : 16-2406-01-102-37-S00N-21-P-V-MAINTENANCE

Scheme Total : 332925.00 ✓

Sub Vch Dt	Sub Vch No	Bill No	Gross	TODed	AGDed	NetAmt
19/03/2021	000265	KLU009812020100095	332925.00	8127.00	0.00	324798.00

Head Of Account : 16-2406-01-102-37-S00N-30-P-V-MOTOR VEHICLES (OUTSOURCED VEHICLES/POL/Repairs)

Scheme Total : 5836.00 ✓

Sub Vch Dt	Sub Vch No	Bill No	Gross	TODed	AGDed	NetAmt
05/03/2021	000081	KLU009812020100089	5836.00	0.00	0.00	5836.00

# Head Of Account Wise DDO Expenditure/Bills

From 01/03/2021 to 31/03/2021

100

Head Of Account : 16-2406-01-102-37-S00N-33-P-V-MATERIAL AND SUPPLY

Scheme Total : 24407.00

Sub Vch Dt	Sub Vch No	Bill No	Gross	TODed	AGDed	NetAmt
19/03/2021	000244	KLU009812020100096	11367.00	0.00	0.00	11367.00
19/03/2021	000245	KLU009812020100097	13040.00	0.00	0.00	13040.00

Head Of Account : 00-8658-00-101-08-S00N-00-N-V-

Scheme Total : 246854.00

Sub Vch Dt	Sub Vch No	Bill No	Gross	TODed	AGDed	NetAmt
30/03/2021	000023	KLU009812020100117	246854.00	0.00	0.00	246854.00

## Head Of Account Wise DDO Expenditure/Bills

From 01/03/2021 to 31/03/2021

DDO Discription :

MDI00-982-DISTRICT PROJECT OFFICER

Head Of Account : 29-2071-01-115-01-S00N-38-N-V-PENSIONS

Scheme Total : 608210.00

Sub Vch Dt	Sub Vch No	Bill No	Gross	TODed	AGDed	NetAmt
19/03/2021	000104	MDI009822020100228	608210.00	0.00	0.00	608210.00

Head Of Account : 16-2406-01-102-37-S00N-01-P-V-SALARIES

Scheme Total : 574191.00 ✓

Sub Vch Dt	Sub Vch No	Bill No	Gross	TODed	AGDed	NetAmt
01/03/2021	000016	MDI00982022021-001	79167.00	20427.00	0.00	58740.00
01/03/2021	000017	MDI00982022021-002	261915.00	13450.00	118000.00	130465.00
01/03/2021	000018	MDI00982022021-003	145024.00	13224.00	0.00	131800.00
01/03/2021	000019	MDI00982022021-004	38893.00	3549.00	0.00	35344.00
01/03/2021	000020	MDI00982022021-005	49192.00	4496.00	0.00	44696.00

Head Of Account : 16-2406-01-102-37-S00N-05-P-V-OFFICE EXPENSES

Scheme Total : 80244.00 ✓

Sub Vch Dt	Sub Vch No	Bill No	Gross	TODed	AGDed	NetAmt
30/03/2021	000479	MDI009822020100284	1000.00	0.00	0.00	1000.00
30/03/2021	000480	MDI009822020100296	9.00	0.00	0.00	9.00
30/03/2021	000481	MDI009822020100285	310.00	0.00	0.00	310.00
30/03/2021	000524	MDI009822020100235	19583.00	0.00	0.00	19583.00
30/03/2021	000525	MDI009822020100233	19437.00	0.00	0.00	19437.00
30/03/2021	000526	MDI009822020100234	5489.00	0.00	0.00	5489.00
30/03/2021	000527	MDI009822020100232	16720.00	0.00	0.00	16720.00
30/03/2021	000528	MDI009822020100230	8796.00	0.00	0.00	8796.00
31/03/2021	000669	MDI009822020100262	8900.00	0.00	0.00	8900.00

Head Of Account : 16-2406-01-102-37-S00N-06-P-V-MEDICAL REIMBURSEMENT

Scheme Total : 7580.00 ✓

Sub Vch Dt	Sub Vch No	Bill No	Gross	TODed	AGDed	NetAmt
30/03/2021	000468	MDI009822020100261	3593.00	0.00	0.00	3593.00
30/03/2021	000469	MDI009822020100269	3828.00	0.00	0.00	3828.00
30/03/2021	000470	MDI009822020100293	159.00	0.00	0.00	159.00

Head Of Account : 16-2406-01-102-37-S00N-09-P-V-ADVERTISING & PUBLICITY

Scheme Total : 20000.00 ✓

Sub Vch Dt	Sub Vch No	Bill No	Gross	TODed	AGDed	NetAmt
31/03/2021	000734	MDI009822020100291	690.00	0.00	0.00	690.00
31/03/2021	000735	MDI009822020100288	18720.00	0.00	0.00	18720.00
31/03/2021	000736	MDI009822020100287	590.00	0.00	0.00	590.00

Head Of Account : 16-2406-01-102-37-S00N-20-P-V-OTHER CHARGES

Scheme Total : 16129951.00 ✓

Sub Vch Dt	Sub Vch No	Bill No	Gross	TODed	AGDed	NetAmt
30/03/2021	000457	MDI009822020100279	178500.00	5355.00	0.00	173145.00
30/03/2021	000458	MDI009822020100280	784200.00	21006.00	0.00	763194.00
30/03/2021	000459	MDI009822020100274	173410.00	1735.00	0.00	171675.00
30/03/2021	000460	MDI009822020100275	141920.00	1449.00	0.00	140471.00

## Head Of Account Wise DDO Expenditure/Bills

From 01/03/2021 to 31/03/2021

Head Of Account : 16-2406-01-102-37-S00N-20-P-V-OTHER CHARGES

Scheme Total : 16129951.00

Sub Vch Dt	Sub Vch No	Bill No	Gross	TODed	AGDed	NetAmt
30/03/2021	000461	MDI009822020100276	161688.00	1617.00	0.00	160071.00
30/03/2021	000462	MDI009822020100277	246626.00	2468.00	0.00	244158.00
30/03/2021	000463	MDI009822020100278	88026.00	881.00	0.00	87145.00
30/03/2021	000464	MDI009822020100273	214676.00	2148.00	0.00	212528.00
30/03/2021	000492	MDI009822020100240	452400.00	12171.00	0.00	440229.00
30/03/2021	000495	MDI009822020100241	410000.00	10983.00	0.00	399017.00
30/03/2021	000496	MDI009822020100243	1055743.00	29410.00	0.00	1026333.00
30/03/2021	000497	MDI009822020100242	456070.00	12219.00	0.00	443851.00
31/03/2021	000663	MDI009822020100255	397170.00	10200.00	0.00	386970.00
31/03/2021	000664	MDI009822020100254	160300.00	1603.00	0.00	158697.00
31/03/2021	000665	MDI009822020100253	359395.00	9888.00	0.00	349507.00
31/03/2021	000666	MDI009822020100256	204150.00	2042.00	0.00	202108.00
31/03/2021	000670	MDI009822020100283	1463000.00	39186.00	0.00	1423814.00
31/03/2021	000671	MDI009822020100281	823800.00	22065.00	0.00	801735.00
31/03/2021	000672	MDI009822020100257	405400.00	12162.00	0.00	393238.00
31/03/2021	000677	MDI009822020100252	337460.00	3374.00	0.00	334086.00
31/03/2021	000680	MDI009822020100282	974250.00	25827.00	0.00	948423.00
31/03/2021	000681	MDI009822020100251	506220.00	5062.00	0.00	501158.00
31/03/2021	000682	MDI009822020100272	230569.00	3868.00	0.00	226701.00
31/03/2021	000683	MDI009822020100247	740100.00	12610.00	0.00	727490.00
31/03/2021	000684	MDI009822020100248	781648.00	7816.00	0.00	773832.00
31/03/2021	000685	MDI009822020100263	476800.00	12771.00	0.00	464029.00
31/03/2021	000703	MDI009822020100265	112085.00	1121.00	0.00	110964.00
31/03/2021	000704	MDI009822020100266	477786.00	4778.00	0.00	473008.00
31/03/2021	000705	MDI009822020100268	430766.00	4308.00	0.00	426458.00
31/03/2021	000706	MDI009822020100267	489289.00	4892.00	0.00	484397.00
31/03/2021	000708	MDI009822020100246	10065.00	0.00	0.00	10065.00
31/03/2021	000709	MDI009822020100244	41830.00	0.00	0.00	41830.00
31/03/2021	000710	MDI009822020100245	7275.00	0.00	0.00	7275.00
31/03/2021	000717	MDI009822020100270	78000.00	780.00	0.00	77220.00
31/03/2021	000718	MDI009822020100271	131000.00	1310.00	0.00	129690.00
31/03/2021	000730	MDI009822020100299	2040.00	0.00	0.00	2040.00
31/03/2021	000732	MDI009822020100295	759.00	0.00	0.00	759.00
31/03/2021	000733	MDI009822020100294	7150.00	0.00	0.00	7150.00
31/03/2021	000743	MDI009822020100264	312200.00	8364.00	0.00	303836.00
31/03/2021	000744	MDI009822020100249	935480.00	16099.00	0.00	919381.00
31/03/2021	000745	MDI009822020100286	3500.00	0.00	0.00	3500.00
31/03/2021	000746	MDI009822020100289	97594.00	2718.00	0.00	94876.00
31/03/2021	000747	MDI009822020100290	97100.00	971.00	0.00	96129.00
31/03/2021	000748	MDI009822020100250	672511.00	14489.00	0.00	658022.00

## Head Of Account Wise DDO Expenditure/Bills

From 01/03/2021 to 31/03/2021

Head Of Account : 16-2406-01-102-37-S00N-21-P-V-MAINTENANCE

Scheme Total : 263582.00 ✓

Sub Vch Dt	Sub Vch No	Bill No	Gross	TODed	AGDed	NetAmt
05/03/2021	000050	MDI009822020100225	216800.00	6504.00	0.00	210296.00
31/03/2021	000731	MDI009822020100297	46782.00	1263.00	0.00	45519.00

Head Of Account : 32-2406-01-789-17-S00N-20-P-V-OTHER CHARGES

Scheme Total : 1125855.00 ✓

Sub Vch Dt	Sub Vch No	Bill No	Gross	TODed	AGDed	NetAmt
30/03/2021	000490	MDI009822020100237	127600.00	1276.00	0.00	126324.00
30/03/2021	000491	MDI009822020100236	557500.00	5575.00	0.00	551925.00
30/03/2021	000493	MDI009822020100239	258267.00	2583.00	0.00	255684.00
30/03/2021	000494	MDI009822020100238	127700.00	1277.00	0.00	126423.00
31/03/2021	000749	MDI009822020100259	54788.00	548.00	0.00	54240.00

Head Of Account : 32-2406-01-789-17-S00N-21-P-V-MAINTENANCE

Scheme Total : 1521000.00 ✓

Sub Vch Dt	Sub Vch No	Bill No	Gross	TODed	AGDed	NetAmt
03/03/2021	000027	MDI009822020100226	73923.00	0.00	0.00	73923.00
23/03/2021	000428	MDI009822020100229	1170000.00	31344.00	0.00	1138656.00
31/03/2021	000737	MDI009822020100298	273563.00	7335.00	0.00	266228.00
31/03/2021	000755	MDI009822020100260	3514.00	0.00	0.00	3514.00

Head Of Account : 16-2406-01-102-37-S00N-64-P-V-TRANSFER EXPENSES

Scheme Total : 3127.00 ✓

Sub Vch Dt	Sub Vch No	Bill No	Gross	TODed	AGDed	NetAmt
31/03/2021	000754	MDI009822020100258	3127.00	0.00	0.00	3127.00

Head Of Account : 00-8009-01-101-02-S00N-47-N-V-ADVANCES

Scheme Total : 1000000.00

Sub Vch Dt	Sub Vch No	Bill No	Gross	TODed	AGDed	NetAmt
12/03/2021	000082	MDI009822020100227	1000000.00	0.00	0.00	1000000.00

1  
2  
3  
4  
5  
6  
7  
8  
9  
10  
11  
12  
13  
14  
15  
16  
17  
18  
19  
20  
21  
22  
23  
24  
25  
26  
27  
28  
29  
30  
31  
32  
33  
34  
35  
36  
37  
38  
39  
40  
41  
42  
43  
44  
45  
46  
47  
48  
49  
50  
51  
52  
53  
54  
55  
56  
57  
58  
59  
60  
61  
62  
63  
64  
65  
66  
67  
68  
69  
70  
71  
72  
73  
74  
75  
76  
77  
78  
79  
80  
81  
82  
83  
84  
85  
86  
87  
88  
89  
90  
91  
92  
93  
94  
95  
96  
97  
98  
99  
100

## Head Of Account Wise DDO Expenditure/Bills

From 01/03/2021 to 31/03/2021

DDO Discription : HMR00-983-DISTRICT PROJECT OFFICER

Head Of Account : 16-2406-01-102-37-S00N-01-P-V-SALARIES

Scheme Total : 427807.00 ✓

Sub Vch Dt	Sub Vch No	Bill No	Gross	TODed	AGDed	NetAmt
01/03/2021	000001	HMR00983022021-001	137967.00	35594.00	35000.00	67373.00
01/03/2021	000002	HMR00983022021-002	131105.00	6793.00	20000.00	104312.00
01/03/2021	000003	HMR00983022021-003	111939.00	10183.00	0.00	101756.00
01/03/2021	000004	HMR00983022021-004	46796.00	4237.00	0.00	42559.00

Head Of Account : 16-2406-01-102-37-S00N-05-P-V-OFFICE EXPENSES

Scheme Total : 80081.00 ✓

Sub Vch Dt	Sub Vch No	Bill No	Gross	TODed	AGDed	NetAmt
23/03/2021	000125	HMR009832020100200	1480.00	0.00	0.00	1480.00
23/03/2021	000159	HMR009832020100198	1671.00	0.00	0.00	1671.00
23/03/2021	000160	HMR009832020100199	12265.00	0.00	0.00	12265.00
23/03/2021	000161	HMR009832020100201	6028.00	0.00	0.00	6028.00
23/03/2021	000162	HMR009832020100202	16724.00	0.00	0.00	16724.00
23/03/2021	000163	HMR009832020100203	4055.00	0.00	0.00	4055.00
23/03/2021	000164	HMR009832020100204	8260.00	0.00	0.00	8260.00
30/03/2021	000268	HMR009832020100227	29598.00	0.00	0.00	29598.00

Head Of Account : 16-2406-01-102-37-S00N-06-P-V-MEDICAL REIMBURSEMENT

Scheme Total : 1528.00 ✓

Sub Vch Dt	Sub Vch No	Bill No	Gross	TODed	AGDed	NetAmt
04/03/2021	000028	HMR009832020100184	1528.00	0.00	0.00	1528.00

Head Of Account : 16-2406-01-102-37-S00N-09-P-V-ADVERTISING & PUBLICITY

Scheme Total : 21109.00 ✓

Sub Vch Dt	Sub Vch No	Bill No	Gross	TODed	AGDed	NetAmt
23/03/2021	000165	HMR009832020100206	21109.00	0.00	0.00	21109.00

Head Of Account : 16-2406-01-102-37-S00N-20-P-V-OTHER CHARGES

Scheme Total : 30460567.00 ✓

Sub Vch Dt	Sub Vch No	Bill No	Gross	TODed	AGDed	NetAmt
25/03/2021	000168	HMR009832020100218	45334.00	0.00	0.00	45334.00
25/03/2021	000169	HMR009832020100217	136700.00	0.00	0.00	136700.00
25/03/2021	000170	HMR009832020100216	1992300.00	53457.00	0.00	1938843.00
25/03/2021	000171	HMR009832020100215	353900.00	9480.00	0.00	344420.00
25/03/2021	000172	HMR009832020100214	2001000.00	53700.00	0.00	1947300.00
25/03/2021	000173	HMR009832020100213	566869.00	15597.00	0.00	551272.00
25/03/2021	000174	HMR009832020100211	3463170.00	92763.00	0.00	3370407.00
25/03/2021	000175	HMR009832020100210	739090.00	18930.00	0.00	720160.00
25/03/2021	000176	HMR009832020100209	323515.00	0.00	0.00	323515.00
25/03/2021	000177	HMR009832020100208	481110.00	0.00	0.00	481110.00
25/03/2021	000178	HMR009832020100207	20600.00	0.00	0.00	20600.00
25/03/2021	000207	HMR009832020100226	319284.00	0.00	0.00	319284.00
25/03/2021	000237	HMR009832020100212	5689.00	0.00	0.00	5689.00
30/03/2021	000270	HMR009832020100231	4203700.00	112653.00	0.00	4091047.00



## Head Of Account Wise DDO Expenditure/Bills

From 01/03/2021 to 31/03/2021

Head Of Account : 16-2406-01-102-37-S00N-20-P-V-OTHER CHARGES

Scheme Total : 30460567.00

Sub Vch Dt	Sub Vch No	Bill No	Gross	TODed	AGDed	NetAmt
30/03/2021	000320	HMR009832020100220	1550300.00	41550.00	0.00	1508750.00
30/03/2021	000321	HMR009832020100221	499700.00	13386.00	0.00	486314.00
30/03/2021	000322	HMR009832020100222	664331.00	17502.00	0.00	646829.00
30/03/2021	000323	HMR009832020100223	1092900.00	29280.00	0.00	1063620.00
30/03/2021	000324	HMR009832020100224	951000.00	25503.00	0.00	925497.00
30/03/2021	000325	HMR009832020100225	445000.00	11946.00	0.00	433054.00
30/03/2021	000358	HMR009832020100232	1409400.00	35316.00	0.00	1374084.00
30/03/2021	000359	HMR009832020100233	643500.00	17268.00	0.00	626232.00
30/03/2021	000360	HMR009832020100234	1969400.00	52764.00	0.00	1916636.00
30/03/2021	000361	HMR009832020100235	1580600.00	42372.00	0.00	1538228.00
30/03/2021	000362	HMR009832020100237	119035.00	4788.00	0.00	114247.00
30/03/2021	000364	HMR009832020100236	143160.00	3837.00	0.00	139323.00
31/03/2021	000394	HMR009832020100229	196000.00	5271.00	0.00	190729.00
31/03/2021	000395	HMR009832020100230	4541900.00	121686.00	0.00	4420214.00
31/03/2021	000407	HMR009832020100228	2080.00	0.00	0.00	2080.00

Head Of Account : 16-2406-01-102-37-S00N-21-P-V-MAINTENANCE

Scheme Total : 200045.00

Sub Vch Dt	Sub Vch No	Bill No	Gross	TODed	AGDed	NetAmt
31/03/2021	000408	HMR009832020100240	200045.00	6756.00	0.00	193289.00

Head Of Account : 32-2406-01-789-17-S00N-20-P-V-OTHER CHARGES

Scheme Total : 8126100.00

Sub Vch Dt	Sub Vch No	Bill No	Gross	TODed	AGDed	NetAmt
06/03/2021	000037	HMR009832020100186	1568558.00	42015.00	0.00	1526543.00
12/03/2021	000049	HMR009832020100189	24666.00	0.00	0.00	24666.00
12/03/2021	000050	HMR009832020100188	198000.00	5304.00	0.00	192696.00
17/03/2021	000067	HMR009832020100195	630100.00	16907.00	0.00	613193.00
17/03/2021	000068	HMR009832020100197	5989.00	0.00	0.00	5989.00
17/03/2021	000069	HMR009832020100193	150000.00	0.00	0.00	150000.00
17/03/2021	000070	HMR009832020100194	1590900.00	42628.00	0.00	1548272.00
17/03/2021	000073	HMR009832020100191	2484250.00	66543.00	0.00	2417707.00
17/03/2021	000074	HMR009832020100192	127940.00	0.00	0.00	127940.00
17/03/2021	000075	HMR009832020100190	706897.00	18936.00	0.00	687961.00
23/03/2021	000158	HMR009832020100196	638800.00	17119.00	0.00	621681.00

Head Of Account : 32-2406-01-789-17-S00N-21-P-V-MAINTENANCE

Scheme Total : 50000.00

Sub Vch Dt	Sub Vch No	Bill No	Gross	TODed	AGDed	NetAmt
30/03/2021	000363	HMR009832020100238	50000.00	0.00	0.00	50000.00

Head Of Account : 00-8658-00-101-08-S00N-00-N-V-

Scheme Total : 36413.00

Sub Vch Dt	Sub Vch No	Bill No	Gross	TODed	AGDed	NetAmt
08/03/2021	000002	HMR009832020100187	36413.00	0.00	0.00	36413.00

# Head Of Account Wise DDO Expenditure/Bills

From 01/03/2021 to 31/03/2021

DDO Description :

UNA00-984-DISTRICT PROJECT OFFICER

Head Of Account : 16-2406-01-102-37-S00N-01-P-V-SALARIES

Scheme Total : 456945.00 ✓

Sub Vch Dt	Sub Vch No	Bill No	Gross	TODed	AGDed	NetAmt
01/03/2021	000004	UNA00984022021-001	79167.00	14915.00	0.00	64252.00
01/03/2021	000005	UNA00984022021-002	137921.00	26090.00	60000.00	51831.00
01/03/2021	000006	UNA00984022021-003	239857.00	31780.00	0.00	208077.00

Head Of Account : 16-2406-01-102-37-S00N-05-P-V-OFFICE EXPENSES

Scheme Total : 125027.00 ✓

Sub Vch Dt	Sub Vch No	Bill No	Gross	TODed	AGDed	NetAmt
22/03/2021	000109	UNA009842020100262	1447.00	0.00	0.00	1447.00
22/03/2021	000122	UNA009842020100254	58604.00	0.00	0.00	58604.00
22/03/2021	000123	UNA009842020100257	26575.00	0.00	0.00	26575.00
22/03/2021	000124	UNA009842020100261	4286.00	0.00	0.00	4286.00
22/03/2021	000125	UNA009842020100260	9950.00	0.00	0.00	9950.00
22/03/2021	000130	UNA009842020100259	22557.00	0.00	0.00	22557.00
24/03/2021	000144	UNA009842020100251	1608.00	0.00	0.00	1608.00

Head Of Account : 16-2406-01-102-37-S00N-09-P-V-ADVERTISING & PUBLICITY

Scheme Total : 14451.00 ✓

Sub Vch Dt	Sub Vch No	Bill No	Gross	TODed	AGDed	NetAmt
22/03/2021	000121	UNA009842020100250	14451.00	0.00	0.00	14451.00

Head Of Account : 16-2406-01-102-37-S00N-20-P-V-OTHER CHARGES

Scheme Total : 27294807.00 ✓

Sub Vch Dt	Sub Vch No	Bill No	Gross	TODed	AGDed	NetAmt
02/03/2021	000010	UNA009842020100244	8173.00	0.00	0.00	8173.00
22/03/2021	000126	UNA009842020100256	3002777.00	86015.00	0.00	2916762.00
22/03/2021	000127	UNA009842020100253	827343.00	24130.00	0.00	803213.00
22/03/2021	000128	UNA009842020100252	3312639.00	96681.00	0.00	3215958.00
24/03/2021	000142	UNA009842020100263	1920.00	0.00	0.00	1920.00
24/03/2021	000143	UNA009842020100265	56500.00	385.00	0.00	56115.00
25/03/2021	000151	UNA009842020100264	8706066.00	258494.00	0.00	8447572.00
30/03/2021	000196	UNA009842020100275	1529.00	0.00	0.00	1529.00
30/03/2021	000201	UNA009842020100281	50428.00	1369.00	0.00	49059.00
30/03/2021	000215	UNA009842020100277	3701812.00	104861.00	0.00	3596951.00
30/03/2021	000217	UNA009842020100278	6029251.00	168749.00	0.00	5860502.00
30/03/2021	000218	UNA009842020100270	111894.00	3117.00	0.00	108777.00
30/03/2021	000227	UNA009842020100280	2200.00	0.00	0.00	2200.00
31/03/2021	000237	UNA009842020100279	1482275.00	41621.00	0.00	1440654.00

Head Of Account : 16-2406-01-102-37-S00N-21-P-V-MAINTENANCE

Scheme Total : 43.00 ✓

Sub Vch Dt	Sub Vch No	Bill No	Gross	TODed	AGDed	NetAmt
30/03/2021	000194	UNA009842020100274	43.00	0.00	0.00	43.00

## Head Of Account Wise DDO Expenditure/Bills

From 01/03/2021 to 31/03/2021

Head Of Account : 32-2406-01-789-17-S00N-21-P-V-MAINTENANCE

Scheme Total : 135100.00

Sub Vch Dt	Sub Vch No	Bill No	Gross	TODed	AGDed	NetAmt
17/03/2021	000081	UNA009842020100245	31793.00	0.00	0.00	31793.00
17/03/2021	000082	UNA009842020100246	50386.00	0.00	0.00	50386.00
17/03/2021	000089	UNA009842020100247	7080.00	0.00	0.00	7080.00
30/03/2021	000195	UNA009842020100273	45841.00	0.00	0.00	45841.00

Head Of Account : 00-8658-00-101-08-S00N-00-N-V-

Scheme Total : 8055.00

Sub Vch Dt	Sub Vch No	Bill No	Gross	TODed	AGDed	NetAmt
01/03/2021	000001	UNA009842020100243	8055.00	0.00	0.00	8055.00

## Head Of Account Wise DDO Expenditure/Bills

From 01/03/2021 to 31/03/2021

DDO Discription : KNG00-985-DISTRICT PROJECT OFFICER

Head Of Account : 16-2406-01-102-37-S00N-01-P-V-SALARIES

Scheme Total : 853029.00 ✓

Sub Vch Dt	Sub Vch No	Bill No	Gross	TODed	AGDed	NetAmt
01/03/2021	000001	KNG00985022021-001	106096.00	23040.00	34000.00	49056.00
01/03/2021	000002	KNG00985022021-002	267600.00	75115.00	100000.00	92485.00
01/03/2021	000003	KNG00985022021-003	364495.00	35774.00	0.00	328721.00
24/03/2021	000516	KNG009852020100534	114838.00	20084.00	0.00	94754.00

Head Of Account : 16-2406-01-102-37-S00N-05-P-V-OFFICE EXPENSES

Scheme Total : 208230.00 ✓

Sub Vch Dt	Sub Vch No	Bill No	Gross	TODed	AGDed	NetAmt
22/03/2021	000346	KNG009852020100444	26408.00	0.00	0.00	26408.00
24/03/2021	000508	KNG009852020100434	13545.00	0.00	0.00	13545.00
24/03/2021	000515	KNG009852020100439	15259.00	0.00	0.00	15259.00
24/03/2021	000542	KNG009852020100448	2720.00	0.00	0.00	2720.00
24/03/2021	000543	KNG009852020100447	9000.00	0.00	0.00	9000.00
24/03/2021	000544	KNG009852020100446	11711.00	0.00	0.00	11711.00
24/03/2021	000545	KNG009852020100445	8674.00	0.00	0.00	8674.00
24/03/2021	000546	KNG009852020100443	2830.00	0.00	0.00	2830.00
24/03/2021	000547	KNG009852020100442	24297.00	0.00	0.00	24297.00
24/03/2021	000548	KNG009852020100441	12395.00	0.00	0.00	12395.00
24/03/2021	000549	KNG009852020100440	7334.00	0.00	0.00	7334.00
24/03/2021	000551	KNG009852020100438	3350.00	0.00	0.00	3350.00
24/03/2021	000552	KNG009852020100437	13420.00	0.00	0.00	13420.00
24/03/2021	000553	KNG009852020100436	9005.00	0.00	0.00	9005.00
30/03/2021	000664	KNG009852020100487	1900.00	0.00	0.00	1900.00
30/03/2021	000713	KNG009852020100547	30829.00	0.00	0.00	30829.00
30/03/2021	000717	KNG009852020100549	11283.00	0.00	0.00	11283.00
31/03/2021	000934	KNG009852020100536	4270.00	0.00	0.00	4270.00

Head Of Account : 16-2406-01-102-37-S00N-09-P-V-ADVERTISING & PUBLICITY

Scheme Total : 25762.00 ✓

Sub Vch Dt	Sub Vch No	Bill No	Gross	TODed	AGDed	NetAmt
24/03/2021	000507	KNG009852020100435	25762.00	0.00	0.00	25762.00

Head Of Account : 16-2406-01-102-37-S00N-20-P-V-OTHER CHARGES

Scheme Total : 40030607.00 ✓

Sub Vch Dt	Sub Vch No	Bill No	Gross	TODed	AGDed	NetAmt
01/03/2021	000029	KNG009852020100305	9253.00	0.00	0.00	9253.00
01/03/2021	000030	KNG009852020100307	8615.00	0.00	0.00	8615.00
12/03/2021	000136	KNG009852020100327	49855.00	0.00	0.00	49855.00
12/03/2021	000143	KNG009852020100342	2216.00	0.00	0.00	2216.00
12/03/2021	000148	KNG009852020100338	36960.00	0.00	0.00	36960.00
12/03/2021	000166	KNG009852020100334	11070.00	0.00	0.00	11070.00
12/03/2021	000167	KNG009852020100332	23220.00	0.00	0.00	23220.00
17/03/2021	000178	KNG009852020100387	21895.00	0.00	0.00	21895.00

## Head Of Account Wise DDO Expenditure/Bills

From 01/03/2021 to 31/03/2021

Head Of Account : 16-2406-01-102-37-S00N-20-P-V-OTHER CHARGES

Scheme Total : 40030607.00

Sub Vch Dt	Sub Vch No	Bill No	Gross	TODed	AGDed	NetAmt
17/03/2021	000180	KNG009852020100386	4644.00	0.00	0.00	4644.00
17/03/2021	000181	KNG009852020100385	1500.00	0.00	0.00	1500.00
18/03/2021	000266	KNG009852020100397	54483.00	0.00	0.00	54483.00
23/03/2021	000376	KNG009852020100426	172675.00	0.00	0.00	172675.00
24/03/2021	000509	KNG009852020100432	160272.00	0.00	0.00	160272.00
24/03/2021	000510	KNG009852020100431	188300.00	0.00	0.00	188300.00
24/03/2021	000511	KNG009852020100430	188600.00	0.00	0.00	188600.00
24/03/2021	000512	KNG009852020100429	187050.00	0.00	0.00	187050.00
24/03/2021	000513	KNG009852020100428	313486.00	6270.00	0.00	307216.00
24/03/2021	000514	KNG009852020100422	476707.00	9534.00	0.00	467173.00
24/03/2021	000522	KNG009852020100418	455640.00	9112.00	0.00	446528.00
24/03/2021	000523	KNG009852020100417	488150.00	9764.00	0.00	478386.00
24/03/2021	000538	KNG009852020100420	476707.00	9534.00	0.00	467173.00
24/03/2021	000539	KNG009852020100419	472223.00	9444.00	0.00	462779.00
24/03/2021	000540	KNG009852020100423	481640.00	9632.00	0.00	472008.00
24/03/2021	000541	KNG009852020100424	292500.00	5850.00	0.00	286650.00
24/03/2021	000550	KNG009852020100414	347935.00	6960.00	0.00	340975.00
24/03/2021	000554	KNG009852020100416	267790.00	5356.00	0.00	262434.00
24/03/2021	000555	KNG009852020100415	320250.00	6406.00	0.00	313844.00
24/03/2021	000556	KNG009852020100413	127964.00	1544.00	0.00	126420.00
24/03/2021	000557	KNG009852020100412	162400.00	3248.00	0.00	159152.00
24/03/2021	000558	KNG009852020100411	576800.00	11536.00	0.00	565264.00
24/03/2021	000559	KNG009852020100410	202150.00	0.00	0.00	202150.00
25/03/2021	000573	KNG009852020100406	385350.00	7708.00	0.00	377642.00
25/03/2021	000574	KNG009852020100425	494089.00	9882.00	0.00	484207.00
25/03/2021	000575	KNG009852020100408	202450.00	0.00	0.00	202450.00
25/03/2021	000576	KNG009852020100407	462300.00	9246.00	0.00	453054.00
25/03/2021	000577	KNG009852020100409	461250.00	9226.00	0.00	452024.00
25/03/2021	000579	KNG009852020100479	308950.00	0.00	0.00	308950.00
26/03/2021	000596	KNG009852020100470	386590.00	0.00	0.00	386590.00
26/03/2021	000598	KNG009852020100471	781224.00	0.00	0.00	781224.00
26/03/2021	000601	KNG009852020100472	382079.00	0.00	0.00	382079.00
26/03/2021	000603	KNG009852020100474	464048.00	0.00	0.00	464048.00
26/03/2021	000604	KNG009852020100475	460340.00	0.00	0.00	460340.00
26/03/2021	000605	KNG009852020100476	617900.00	0.00	0.00	617900.00
26/03/2021	000606	KNG009852020100477	460350.00	0.00	0.00	460350.00
26/03/2021	000608	KNG009852020100478	308950.00	0.00	0.00	308950.00
26/03/2021	000610	KNG009852020100455	532150.00	0.00	0.00	532150.00
26/03/2021	000611	KNG009852020100456	150365.00	0.00	0.00	150365.00
26/03/2021	000612	KNG009852020100457	475594.00	9512.00	0.00	466082.00
26/03/2021	000613	KNG009852020100458	138600.00	2772.00	0.00	135828.00
26/03/2021	000614	KNG009852020100459	287220.00	0.00	0.00	287220.00

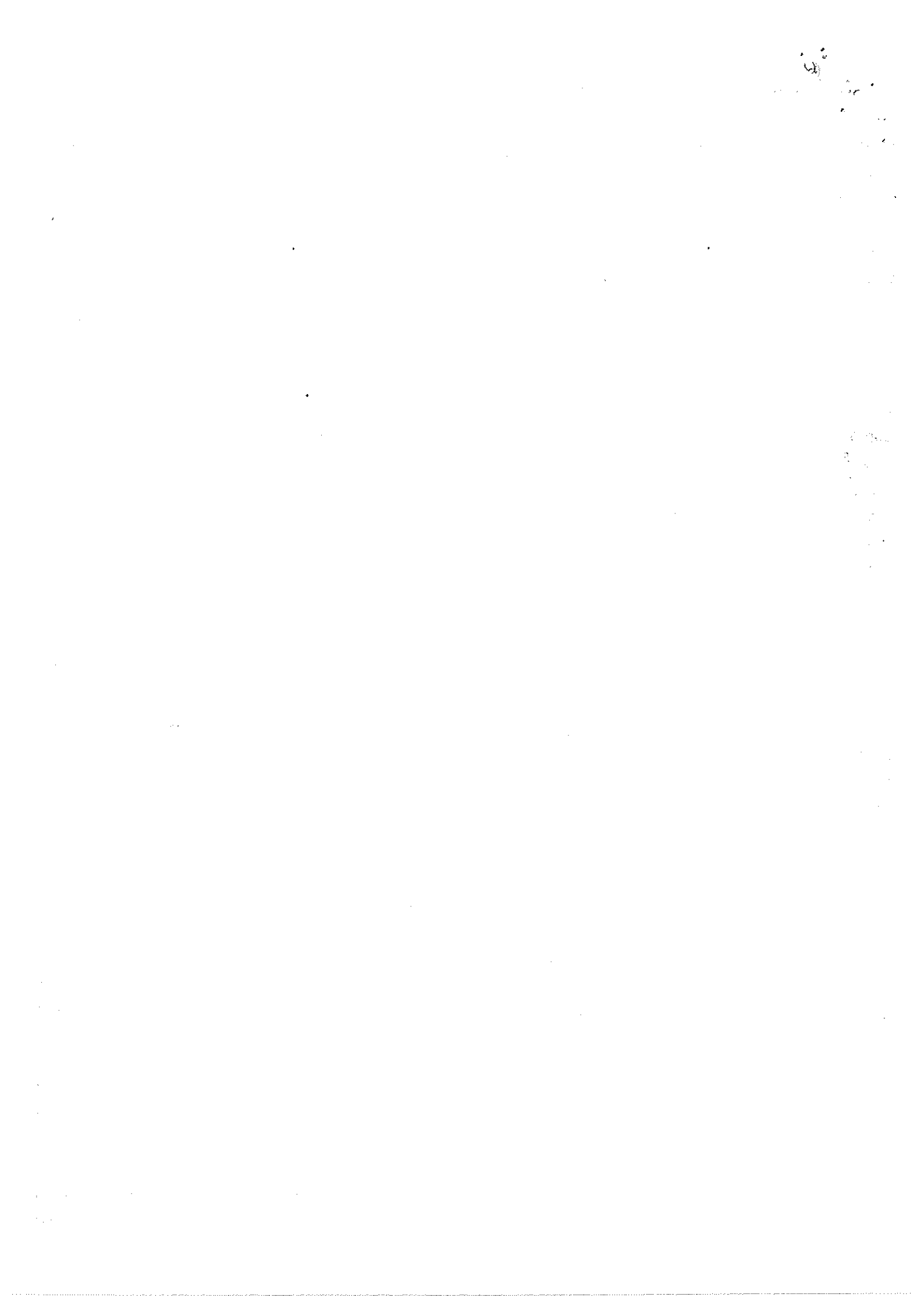
# Head Of Account Wise DDO Expenditure/Bills

From 01/03/2021 to 31/03/2021

Head Of Account : 16-2406-01-102-37-S00N-20-P-V-OTHER CHARGES

Scheme Total : 40030607.00

Sub Vch Dt	Sub Vch No	Bill No	Gross	TODed	AGDed	NetAmt
26/03/2021	000615	KNG009852020100460	487991.00	9760.00	0.00	478231.00
26/03/2021	000616	KNG009852020100451	154200.00	0.00	0.00	154200.00
26/03/2021	000617	KNG009852020100461	483037.00	9660.00	0.00	473377.00
26/03/2021	000618	KNG009852020100452	383800.00	0.00	0.00	383800.00
26/03/2021	000619	KNG009852020100453	996599.00	19932.00	0.00	976667.00
26/03/2021	000620	KNG009852020100462	1227975.00	0.00	0.00	1227975.00
26/03/2021	000621	KNG009852020100454	972527.00	19450.00	0.00	953077.00
26/03/2021	000622	KNG009852020100463	478454.00	9570.00	0.00	468884.00
26/03/2021	000623	KNG009852020100464	487991.00	9760.00	0.00	478231.00
26/03/2021	000624	KNG009852020100465	478454.00	9570.00	0.00	468884.00
26/03/2021	000625	KNG009852020100466	478454.00	9570.00	0.00	468884.00
26/03/2021	000626	KNG009852020100467	604745.00	0.00	0.00	604745.00
26/03/2021	000627	KNG009852020100468	366950.00	0.00	0.00	366950.00
26/03/2021	000628	KNG009852020100469	633130.00	0.00	0.00	633130.00
26/03/2021	000631	KNG009852020100480	263958.00	0.00	0.00	263958.00
30/03/2021	000642	KNG009852020100528	258974.00	5180.00	0.00	253794.00
30/03/2021	000643	KNG009852020100529	474700.00	9494.00	0.00	465206.00
30/03/2021	000663	KNG009852020100486	6000.00	0.00	0.00	6000.00
30/03/2021	000665	KNG009852020100488	13600.00	0.00	0.00	13600.00
30/03/2021	000666	KNG009852020100489	12825.00	0.00	0.00	12825.00
30/03/2021	000667	KNG009852020100490	7650.00	0.00	0.00	7650.00
30/03/2021	000668	KNG009852020100491	16425.00	0.00	0.00	16425.00
30/03/2021	000669	KNG009852020100493	7875.00	0.00	0.00	7875.00
30/03/2021	000670	KNG009852020100494	9675.00	0.00	0.00	9675.00
30/03/2021	000671	KNG009852020100495	13350.00	0.00	0.00	13350.00
30/03/2021	000672	KNG009852020100496	945950.00	14518.00	0.00	931432.00
30/03/2021	000673	KNG009852020100497	13725.00	0.00	0.00	13725.00
30/03/2021	000674	KNG009852020100498	19050.00	0.00	0.00	19050.00
30/03/2021	000675	KNG009852020100500	6825.00	0.00	0.00	6825.00
30/03/2021	000676	KNG009852020100501	6900.00	0.00	0.00	6900.00
30/03/2021	000677	KNG009852020100502	544895.00	0.00	0.00	544895.00
30/03/2021	000678	KNG009852020100503	9675.00	0.00	0.00	9675.00
30/03/2021	000679	KNG009852020100504	9750.00	0.00	0.00	9750.00
30/03/2021	000680	KNG009852020100506	819715.00	7126.00	0.00	812589.00
30/03/2021	000681	KNG009852020100507	1430210.00	16246.00	0.00	1413964.00
30/03/2021	000687	KNG009852020100483	48875.00	0.00	0.00	48875.00
30/03/2021	000688	KNG009852020100484	3120.00	0.00	0.00	3120.00
30/03/2021	000689	KNG009852020100511	761240.00	15224.00	0.00	746016.00
30/03/2021	000690	KNG009852020100512	825100.00	12750.00	0.00	812350.00
30/03/2021	000691	KNG009852020100513	1321025.00	26424.00	0.00	1294601.00
30/03/2021	000693	KNG009852020100510	1019885.00	20398.00	0.00	999487.00
30/03/2021	000694	KNG009852020100485	308800.00	0.00	0.00	308800.00



**Head Of Account Wise DDO Expenditure/Bills**

**From 01/03/2021 to 31/03/2021**

Head Of Account : 16-2406-01-102-37-S00N-20-P-V-OTHER CHARGES

Scheme Total : 40030607.00

Sub Vch Dt	Sub Vch No	Bill No	Gross	TODed	AGDed	NetAmt
30/03/2021	000710	KNG009852020100530	30483.00	0.00	0.00	30483.00
30/03/2021	000718	KNG009852020100538	279473.00	1274.00	0.00	278199.00
30/03/2021	000719	KNG009852020100499	20475.00	0.00	0.00	20475.00
30/03/2021	000720	KNG009852020100539	2134.00	0.00	0.00	2134.00
30/03/2021	000722	KNG009852020100506	8400.00	0.00	0.00	8400.00
30/03/2021	000724	KNG009852020100515	28490.00	0.00	0.00	28490.00
30/03/2021	000727	KNG009852020100516	31990.00	0.00	0.00	31990.00
30/03/2021	000728	KNG009852020100517	128419.00	0.00	0.00	128419.00
30/03/2021	000729	KNG009852020100518	29820.00	0.00	0.00	29820.00
30/03/2021	000730	KNG009852020100519	43820.00	0.00	0.00	43820.00
30/03/2021	000731	KNG009852020100520	40320.00	0.00	0.00	40320.00
30/03/2021	000732	KNG009852020100522	34440.00	0.00	0.00	34440.00
30/03/2021	000749	KNG009852020100427	655750.00	0.00	0.00	655750.00
30/03/2021	000750	KNG009852020100473	281914.00	0.00	0.00	281914.00
30/03/2021	000751	KNG009852020100481	766200.00	0.00	0.00	766200.00
30/03/2021	000752	KNG009852020100508	729978.00	14602.00	0.00	715376.00
30/03/2021	000753	KNG009852020100509	295624.00	5992.00	0.00	293632.00
30/03/2021	000754	KNG009852020100492	16975.00	0.00	0.00	16975.00
31/03/2021	000929	KNG009852020100527	227490.00	0.00	0.00	227490.00
31/03/2021	000930	KNG009852020100531	208400.00	0.00	0.00	208400.00
31/03/2021	000931	KNG009852020100532	349161.00	6934.00	0.00	342177.00
31/03/2021	000932	KNG009852020100533	486313.00	9726.00	0.00	476587.00
31/03/2021	000933	KNG009852020100535	470424.00	9408.00	0.00	461016.00
31/03/2021	000935	KNG009852020100537	268221.00	5364.00	0.00	262857.00
31/03/2021	000936	KNG009852020100521	307350.00	6148.00	0.00	301202.00
31/03/2021	000937	KNG009852020100523	479690.00	9594.00	0.00	470096.00
31/03/2021	000938	KNG009852020100524	448370.00	8968.00	0.00	439402.00
31/03/2021	000939	KNG009852020100525	492926.00	9858.00	0.00	483068.00
31/03/2021	000940	KNG009852020100526	188679.00	0.00	0.00	188679.00
31/03/2021	000944	KNG009852020100482	920050.00	9163.00	0.00	910882.00

Scheme Total : 21154597.00

Head Of Account : 32-2406-01-789-17-S00N-20-P-V-OTHER CHARGES

Sub Vch Dt	Sub Vch No	Bill No	Gross	TODed	AGDed	NetAmt
10/03/2021	000133	KNG009852020100309	224038.00	0.00	0.00	224038.00
10/03/2021	000134	KNG009852020100310	610400.00	12208.00	0.00	598192.00
12/03/2021	000135	KNG009852020100328	94779.00	0.00	0.00	94779.00
12/03/2021	000137	KNG009852020100346	369400.00	7333.00	0.00	362067.00
12/03/2021	000138	KNG009852020100348	146500.00	0.00	0.00	146500.00
12/03/2021	000139	KNG009852020100347	80500.00	0.00	0.00	80500.00
12/03/2021	000140	KNG009852020100344	246500.00	0.00	0.00	246500.00
12/03/2021	000141	KNG009852020100343	437100.00	8594.00	0.00	428506.00
12/03/2021	000142	KNG009852020100345	250500.00	5010.00	0.00	245490.00



Handwritten marks or scribbles in the top right corner.

## Head Of Account Wise DDO Expenditure/Bills

From 01/03/2021 to 31/03/2021

Head Of Account : 32-2406-01-789-17-S00N-20-P-V-OTHER CHARGES

Scheme Total : 21154597.00

Sub VchDt	Sub Vch No	Bill No	Gross	TODed	AGDed	NetAmt
12/03/2021	000144	KNG009852020100351	77669.00	1388.00	0.00	76281.00
12/03/2021	000145	KNG009852020100350	53800.00	0.00	0.00	53800.00
12/03/2021	000146	KNG009852020100349	293900.00	5878.00	0.00	288022.00
12/03/2021	000147	KNG009852020100324	231280.00	4130.00	0.00	227150.00
12/03/2021	000150	KNG009852020100323	296352.00	5292.00	0.00	291060.00
12/03/2021	000151	KNG009852020100322	214300.00	0.00	0.00	214300.00
12/03/2021	000152	KNG009852020100321	212714.00	0.00	0.00	212714.00
12/03/2021	000153	KNG009852020100320	144128.00	0.00	0.00	144128.00
12/03/2021	000154	KNG009852020100311	196932.00	0.00	0.00	196932.00
12/03/2021	000155	KNG009852020100312	152977.00	0.00	0.00	152977.00
12/03/2021	000156	KNG009852020100313	384000.00	7680.00	0.00	376320.00
12/03/2021	000157	KNG009852020100314	141660.00	0.00	0.00	141660.00
12/03/2021	000158	KNG009852020100315	138198.00	0.00	0.00	138198.00
12/03/2021	000159	KNG009852020100316	161715.00	0.00	0.00	161715.00
12/03/2021	000160	KNG009852020100317	323119.00	6462.00	0.00	316657.00
12/03/2021	000161	KNG009852020100318	143973.00	0.00	0.00	143973.00
12/03/2021	000162	KNG009852020100319	273786.00	4890.00	0.00	268896.00
12/03/2021	000163	KNG009852020100337	217144.00	4342.00	0.00	212802.00
12/03/2021	000164	KNG009852020100336	232561.00	4652.00	0.00	227909.00
12/03/2021	000165	KNG009852020100335	251538.00	5030.00	0.00	246508.00
12/03/2021	000168	KNG009852020100333	332998.00	5946.00	0.00	327052.00
12/03/2021	000169	KNG009852020100331	95960.00	0.00	0.00	95960.00
12/03/2021	000170	KNG009852020100329	89300.00	0.00	0.00	89300.00
12/03/2021	000171	KNG009852020100330	88200.00	0.00	0.00	88200.00
17/03/2021	000177	KNG009852020100383	182400.00	0.00	0.00	182400.00
17/03/2021	000179	KNG009852020100382	214500.00	0.00	0.00	214500.00
17/03/2021	000182	KNG009852020100384	221800.00	0.00	0.00	221800.00
17/03/2021	000208	KNG009852020100362	90384.00	0.00	0.00	90384.00
17/03/2021	000209	KNG009852020100374	357220.00	7144.00	0.00	350076.00
17/03/2021	000226	KNG009852020100339	578200.00	11564.00	0.00	566636.00
17/03/2021	000227	KNG009852020100340	52000.00	0.00	0.00	52000.00
17/03/2021	000228	KNG009852020100369	572850.00	11458.00	0.00	561392.00
17/03/2021	000229	KNG009852020100341	417125.00	8342.00	0.00	408783.00
17/03/2021	000230	KNG009852020100353	84096.00	0.00	0.00	84096.00
17/03/2021	000231	KNG009852020100354	168192.00	0.00	0.00	168192.00
17/03/2021	000232	KNG009852020100355	312465.00	6250.00	0.00	306215.00
17/03/2021	000233	KNG009852020100356	468983.00	9380.00	0.00	459603.00
17/03/2021	000234	KNG009852020100357	86480.00	0.00	0.00	86480.00
17/03/2021	000235	KNG009852020100358	179000.00	0.00	0.00	179000.00
17/03/2021	000236	KNG009852020100359	81900.00	0.00	0.00	81900.00
17/03/2021	000237	KNG009852020100360	293990.00	5880.00	0.00	288110.00
17/03/2021	000238	KNG009852020100361	55998.00	0.00	0.00	55998.00

## Head Of Account Wise DDO Expenditure/Bills

From 01/03/2021 to 31/03/2021

Head Of Account : 32-2406-01-789-17-S00N-20-P-V-OTHER CHARGES

Scheme Total : 21154597.00

Sub Vch Dt	Sub Vch No	Bill No	Gross	TODed	AGDed	NetAmt
17/03/2021	000239	KNG009852020100363	226232.00	4524.00	0.00	221708.00
17/03/2021	000240	KNG009852020100364	260170.00	5204.00	0.00	254966.00
17/03/2021	000241	KNG009852020100365	625311.00	6253.00	0.00	619058.00
17/03/2021	000242	KNG009852020100367	572850.00	11458.00	0.00	561392.00
17/03/2021	000243	KNG009852020100368	572850.00	11458.00	0.00	561392.00
17/03/2021	000244	KNG009852020100370	68400.00	0.00	0.00	68400.00
17/03/2021	000245	KNG009852020100371	68400.00	0.00	0.00	68400.00
17/03/2021	000246	KNG009852020100372	401656.00	8034.00	0.00	393622.00
17/03/2021	000247	KNG009852020100373	156000.00	0.00	0.00	156000.00
17/03/2021	000248	KNG009852020100375	17190.00	0.00	0.00	17190.00
17/03/2021	000249	KNG009852020100376	17190.00	0.00	0.00	17190.00
17/03/2021	000250	KNG009852020100377	42977.00	0.00	0.00	42977.00
17/03/2021	000251	KNG009852020100378	17190.00	0.00	0.00	17190.00
17/03/2021	000252	KNG009852020100379	55754.00	0.00	0.00	55754.00
17/03/2021	000253	KNG009852020100380	146980.00	0.00	0.00	146980.00
17/03/2021	000254	KNG009852020100381	78383.00	1568.00	0.00	76815.00
17/03/2021	000255	KNG009852020100352	305320.00	6106.00	0.00	299214.00
18/03/2021	000261	KNG009852020100389	152800.00	0.00	0.00	152800.00
18/03/2021	000262	KNG009852020100390	154000.00	0.00	0.00	154000.00
18/03/2021	000263	KNG009852020100392	494300.00	9886.00	0.00	484414.00
18/03/2021	000264	KNG009852020100393	38871.00	0.00	0.00	38871.00
18/03/2021	000265	KNG009852020100394	305600.00	6112.00	0.00	299488.00
18/03/2021	000267	KNG009852020100398	202720.00	0.00	0.00	202720.00
18/03/2021	000268	KNG009852020100399	486831.00	9736.00	0.00	477095.00
18/03/2021	000269	KNG009852020100400	478980.00	9580.00	0.00	469400.00
18/03/2021	000270	KNG009852020100401	190000.00	0.00	0.00	190000.00
18/03/2021	000271	KNG009852020100403	269110.00	5382.00	0.00	263728.00
18/03/2021	000272	KNG009852020100404	485510.00	9710.00	0.00	475800.00
18/03/2021	000273	KNG009852020100395	489850.00	9798.00	0.00	480052.00
18/03/2021	000274	KNG009852020100396	490280.00	9806.00	0.00	480474.00
19/03/2021	000302	KNG009852020100391	464100.00	9282.00	0.00	454818.00
19/03/2021	000303	KNG009852020100402	467274.00	9346.00	0.00	457928.00
19/03/2021	000304	KNG009852020100405	494988.00	9900.00	0.00	485088.00
19/03/2021	000305	KNG009852020100388	153800.00	0.00	0.00	153800.00
30/03/2021	000644	KNG009852020100546	1096.00	0.00	0.00	1096.00
30/03/2021	000712	KNG009852020100544	9660.00	0.00	0.00	9660.00
30/03/2021	000721	KNG009852020100540	66450.00	0.00	0.00	66450.00

Head Of Account : 32-2406-01-789-17-S00N-21-P-V-MAINTENANCE

Scheme Total : 1723500.00

Sub Vch Dt	Sub Vch No	Bill No	Gross	TODed	AGDed	NetAmt
12/03/2021	000149	KNG009852020100325	91600.00	0.00	0.00	91600.00
17/03/2021	000225	KNG009852020100326	36191.00	0.00	0.00	36191.00

## Head Of Account Wise DDO Expenditure/Bills

From 01/03/2021 to 31/03/2021

Head Of Account : 32-2406-01-739-17-S00N-21-P-V-MAINTENANCE

Scheme Total : 1723500.00 ✓

Sub Vch Dt	Sub Vch No	Bill No	Gross	TODed	AGDed	NetAmt
30/03/2021	000715	KNG009852020100548	208855.00	5350.00	0.00	203505.00
30/03/2021	000723	KNG009852020100541	143000.00	0.00	0.00	143000.00
31/03/2021	000941	KNG009852020100542	250500.00	0.00	0.00	250500.00
31/03/2021	000942	KNG009852020100543	292600.00	0.00	0.00	292600.00
31/03/2021	000943	KNG009852020100545	700754.00	14016.00	0.00	686738.00

Head Of Account : 16-2406-01-102-37-S00N-64-P-V-TRANSFER EXPENSES

Scheme Total : 3590.00 ✓

Sub Vch Dt	Sub Vch No	Bill No	Gross	TODed	AGDed	NetAmt
30/03/2021	000709	KNG009852020100450	3590.00	0.00	0.00	3590.00

Handwritten marks and scribbles in the top right corner.

# Head Of Account Wise DDO Expenditure/Bills

From 01/03/2021 to 31/03/2021

DDQ Description :

CHM00-986-DISTRICT PROJECT OFFICER

Head Of Account : 16-2406-01-102-37-S00N-01-P-V-SALARIES

Scheme Total : 502262.00 ✓

Sub Vch Dt	Sub Vch No	Bill No	Gross	TODed	AGDed	NetAmt
01/03/2021	000001	CHM00986022021-001	85278.00	16216.00	50000.00	19062.00
01/03/2021	000002	CHM00986022021-002	221370.00	27957.00	97000.00	96413.00
01/03/2021	000003	CHM00986022021-003	69799.00	9729.00	0.00	60070.00
31/03/2021	000475	CHM009862020100220	125815.00	0.00	0.00	125815.00

Head Of Account : 16-2406-01-102-37-S00N-05-P-V-OFFICE EXPENSES

Scheme Total : 50595.00 ✓

Sub Vch Dt	Sub Vch No	Bill No	Gross	TODed	AGDed	NetAmt
22/03/2021	000200	CHM009862020100230	2797.00	0.00	0.00	2797.00
22/03/2021	000201	CHM009862020100231	3450.00	0.00	0.00	3450.00
22/03/2021	000202	CHM009862020100232	7500.00	0.00	0.00	7500.00
22/03/2021	000203	CHM009862020100233	375.00	0.00	0.00	375.00
22/03/2021	000204	CHM009862020100234	260.00	0.00	0.00	260.00
22/03/2021	000205	CHM009862020100235	4963.00	0.00	0.00	4963.00
22/03/2021	000206	CHM009862020100203	5600.00	0.00	0.00	5600.00
22/03/2021	000207	CHM009862020100236	1500.00	0.00	0.00	1500.00
22/03/2021	000208	CHM009862020100237	710.00	0.00	0.00	710.00
22/03/2021	000209	CHM009862020100242	460.00	0.00	0.00	460.00
23/03/2021	000224	CHM009862020100238	1600.00	0.00	0.00	1600.00
23/03/2021	000225	CHM009862020100239	1600.00	0.00	0.00	1600.00
23/03/2021	000226	CHM009862020100240	1600.00	0.00	0.00	1600.00
23/03/2021	000227	CHM009862020100241	1600.00	0.00	0.00	1600.00
23/03/2021	000237	CHM009862020100204	5440.00	0.00	0.00	5440.00
30/03/2021	000289	CHM009862020100258	6000.00	0.00	0.00	6000.00
31/03/2021	000502	CHM009862020100302	900.00	0.00	0.00	900.00
31/03/2021	000503	CHM009862020100303	4240.00	0.00	0.00	4240.00

Head Of Account : 16-2406-01-102-37-S00N-06-P-V-MEDICAL REIMBURSEMENT

Scheme Total : 2106.00 ✓

Sub Vch Dt	Sub Vch No	Bill No	Gross	TODed	AGDed	NetAmt
18/03/2021	000108	CHM009862020100221	2106.00	0.00	0.00	2106.00

Head Of Account : 16-2406-01-102-37-S00N-20-P-V-OTHER CHARGES

Scheme Total : 4379257.00 ✓

Sub Vch Dt	Sub Vch No	Bill No	Gross	TODed	AGDed	NetAmt
17/03/2021	000073	CHM009862020100201	1000.00	0.00	0.00	1000.00
17/03/2021	000074	CHM009862020100202	5750.00	0.00	0.00	5750.00
17/03/2021	000075	CHM009862020100200	1500.00	0.00	0.00	1500.00
17/03/2021	000081	CHM009862020100199	772.00	0.00	0.00	772.00
30/03/2021	000290	CHM009862020100257	11270.00	0.00	0.00	11270.00
30/03/2021	000291	CHM009862020100255	8700.00	0.00	0.00	8700.00
30/03/2021	000344	CHM009862020100266	177000.00	1770.00	0.00	175230.00
30/03/2021	000345	CHM009862020100269	140325.00	0.00	0.00	140325.00

## Head Of Account Wise DDO Expenditure/Bills

From 01/03/2021 to 31/03/2021

Head Of Account : 16-2406-01-102-37-S00N-20-P-V-OTHER CHARGES

Scheme Total : 4379257.00

Sub Vch Dt	Sub Vch No	Bill No	Gross	TODed	AGDed	NetAmt
30/03/2021	000369	CHM009862020100253	8700.00	0.00	0.00	8700.00
30/03/2021	000370	CHM009862020100265	236098.00	2361.00	0.00	233737.00
30/03/2021	000371	CHM009862020100259	413650.00	12410.00	0.00	401240.00
30/03/2021	000373	CHM009862020100264	113800.00	1138.00	0.00	112662.00
30/03/2021	000374	CHM009862020100262	140425.00	1404.00	0.00	139021.00
30/03/2021	000375	CHM009862020100263	172475.00	1725.00	0.00	170750.00
30/03/2021	000377	CHM009862020100254	8700.00	0.00	0.00	8700.00
30/03/2021	000380	CHM009862020100271	84195.00	842.00	0.00	83353.00
30/03/2021	000381	CHM009862020100272	133694.00	1337.00	0.00	132357.00
30/03/2021	000382	CHM009862020100273	151438.00	1514.00	0.00	149924.00
30/03/2021	000383	CHM009862020100274	160864.00	1609.00	0.00	159255.00
30/03/2021	000384	CHM009862020100275	93829.00	939.00	0.00	92890.00
30/03/2021	000385	CHM009862020100276	70957.00	710.00	0.00	70247.00
30/03/2021	000386	CHM009862020100270	204349.00	2043.00	0.00	202306.00
30/03/2021	000387	CHM009862020100267	231220.00	2312.00	0.00	228908.00
30/03/2021	000388	CHM009862020100268	198143.00	1981.00	0.00	196162.00
31/03/2021	000477	CHM009862020100252	8735.00	0.00	0.00	8735.00
31/03/2021	000478	CHM009862020100293	75409.00	754.00	0.00	74655.00
31/03/2021	000479	CHM009862020100292	49127.00	491.00	0.00	48636.00
31/03/2021	000480	CHM009862020100291	75306.00	753.00	0.00	74553.00
31/03/2021	000481	CHM009862020100290	22018.00	220.00	0.00	21798.00
31/03/2021	000482	CHM009862020100289	23054.00	231.00	0.00	22823.00
31/03/2021	000483	CHM009862020100288	25179.00	252.00	0.00	24927.00
31/03/2021	000484	CHM009862020100287	35669.00	357.00	0.00	35312.00
31/03/2021	000485	CHM009862020100301	2600.00	0.00	0.00	2600.00
31/03/2021	000486	CHM009862020100300	8700.00	0.00	0.00	8700.00
31/03/2021	000487	CHM009862020100294	40921.00	409.00	0.00	40512.00
31/03/2021	000488	CHM009862020100256	12700.00	0.00	0.00	12700.00
31/03/2021	000489	CHM009862020100281	14607.00	0.00	0.00	14607.00
31/03/2021	000490	CHM009862020100280	34083.00	341.00	0.00	33742.00
31/03/2021	000492	CHM009862020100282	286023.00	8580.00	0.00	277443.00
31/03/2021	000493	CHM009862020100283	249304.00	2494.00	0.00	246810.00
31/03/2021	000494	CHM009862020100285	98057.00	981.00	0.00	97076.00
31/03/2021	000495	CHM009862020100284	42579.00	426.00	0.00	42153.00
31/03/2021	000496	CHM009862020100286	66318.00	664.00	0.00	65654.00
31/03/2021	000507	CHM009862020100279	229110.00	2291.00	0.00	226819.00
31/03/2021	000509	CHM009862020100278	210904.00	2110.00	0.00	208794.00

Head Of Account : 16-2406-01-102-37-S00N-33-P-V-MATERIAL AND SUPPLY

Scheme Total : 1400009.00

Sub Vch Dt	Sub Vch No	Bill No	Gross	TODed	AGDed	NetAmt
22/03/2021	000198	CHM009862020100228	784790.00	13302.00	0.00	771488.00
22/03/2021	000199	CHM009862020100229	154000.00	3080.00	0.00	150920.00

## Head Of Account Wise DDO Expenditure/Bills

From 01/03/2021 to 31/03/2021

Head Of Account : 16-2406-01-102-37-S00N-33-P-V-MATERIAL AND SUPPLY

Scheme Total : 1400009.00 ✓

Sub Vch Dt	Sub Vch No	Bill No	Gross	TODed	AGDed	NetAmt
23/03/2021	000223	CHM009862020100227	209304.00	4186.00	0.00	205118.00
30/03/2021	000364	CHM009862020100249	59500.00	0.00	0.00	59500.00
30/03/2021	000365	CHM009862020100250	49400.00	494.00	0.00	48906.00
30/03/2021	000366	CHM009862020100248	71100.00	0.00	0.00	71100.00
30/03/2021	000367	CHM009862020100247	6650.00	0.00	0.00	6650.00
30/03/2021	000368	CHM009862020100246	14065.00	0.00	0.00	14065.00
30/03/2021	000379	CHM009862020100277	25700.00	0.00	0.00	25700.00
30/03/2021	000389	CHM009862020100251	25500.00	0.00	0.00	25500.00

Head Of Account : 32-2406-01-789-17-S00N-20-P-V-OTHER CHARGES

Scheme Total : 359987.00 ✓

Sub Vch Dt	Sub Vch No	Bill No	Gross	TODed	AGDed	NetAmt
08/03/2021	000031	CHM009862020100191	3857.00	0.00	0.00	3857.00
08/03/2021	000032	CHM009862020100192	1500.00	0.00	0.00	1500.00
08/03/2021	000033	CHM009862020100190	13455.00	0.00	0.00	13455.00
08/03/2021	000034	CHM009862020100193	1500.00	0.00	0.00	1500.00
17/03/2021	000070	CHM009862020100219	700.00	0.00	0.00	700.00
17/03/2021	000071	CHM009862020100218	590.00	0.00	0.00	590.00
17/03/2021	000072	CHM009862020100217	7700.00	0.00	0.00	7700.00
17/03/2021	000080	CHM009862020100198	2800.00	0.00	0.00	2800.00
30/03/2021	000372	CHM009862020100260	56732.00	567.00	0.00	56165.00
31/03/2021	000501	CHM009862020100299	16641.00	0.00	0.00	16641.00
31/03/2021	000504	CHM009862020100261	254512.00	7635.00	0.00	246877.00

Head Of Account : 32-2406-01-789-17-S00N-21-P-V-MAINTENANCE

Scheme Total : 853275.00

Sub Vch Dt	Sub Vch No	Bill No	Gross	TODed	AGDed	NetAmt
18/03/2021	000109	CHM009862020100187	2450.00	0.00	0.00	2450.00
18/03/2021	000110	CHM009862020100197	2221.00	0.00	0.00	2221.00
31/03/2021	000476	CHM009862020100307	2990.00	0.00	0.00	2990.00
31/03/2021	000491	CHM009862020100306	403325.00	12099.00	0.00	391226.00
31/03/2021	000497	CHM009862020100295	29936.00	0.00	0.00	29936.00
31/03/2021	000498	CHM009862020100296	40538.00	0.00	0.00	40538.00
31/03/2021	000499	CHM009862020100297	178430.00	1784.00	0.00	176646.00
31/03/2021	000500	CHM009862020100298	93800.00	938.00	0.00	92862.00
31/03/2021	000505	CHM009862020100304	65200.00	652.00	0.00	64548.00
31/03/2021	000506	CHM009862020100305	34385.00	344.00	0.00	34041.00



13